



Descriptif :

Tous les éléments d'assemblage AMS sont réalisés en Inox 316 L [(DIN 17440 – WN 14404) Z2CND 17-12] ou 304 L.

Principe de fonctionnement :

Les accessoires de cette famille de produits raccordent et fixent tous types de tuyauterie. Ils peuvent être filetés ou à souder selon l'utilisation finale et la particularité de chaque tuyauterie.

Performances :

Les performances attendues pour ce type de produit, ne sont aucunement spécifiées quant aux pressions ou aux températures à prendre en compte, étant données que leur utilisation n'est prévue que pour des montages ou aucune contrainte particulière n'est demandée.

Accessoires adaptés à une utilisation en basse pression.

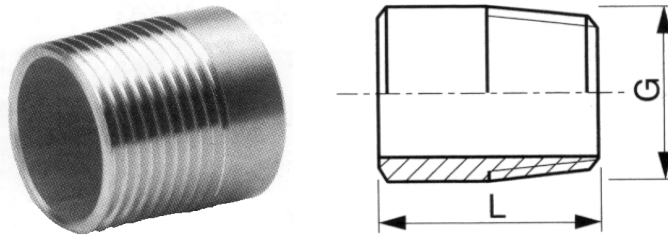
Qualité :

Tous les raccords au pas de gaz sont exécutés selon la norme NFE 03 004
Ce type de matériel est de provenance hors C.E.E pour des raisons tarifaires. Ainsi, ils ne seront utilisés que pour des applications banalisées sans contrainte de sécurité.

ACCESSOIRES DE TUYAUTERIE

Embout mâles -316L- longueur standard

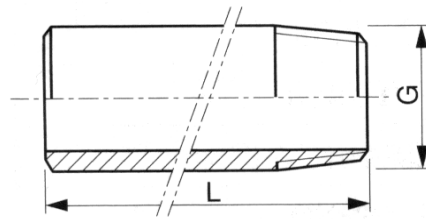
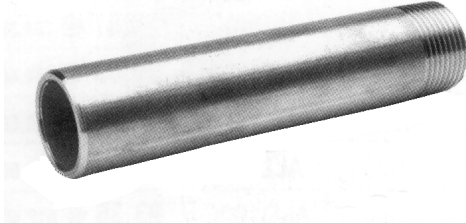
AMSEM



DN	G	L	Poids (kg)	Référence GAZ/BSP	Référence NPT/BRIGGS
5	1/8"	22	0.010	AMSEM5G	AMSEM5N
8	1/4"	22	0.010	AMSEM8G	AMSEM8N
12	3/8"	23	0.015	AMSEM12G	AMSEM12N
15	1/2"	27	0.025	AMSEM15G	AMSEM15N
20	3/4"	33	0.040	AMSEM20G	AMSEM20N
25	1"	35	0.065	AMSEM25G	AMSEM25N
32	1"1/4	36	0.085	AMSEM32G	AMSEM32N
40	1"1/2	41	0.110	AMSEM40G	AMSEM40N
50	2"	46	0.195	AMSEM50G	AMSEM50N
65	2"1/2	55	0.280	AMSEM65G	AMSEM65N
80	3"	60	0.560	AMSEM80G	AMSEM80N
100	4"	80	1.065	AMSEM100G	AMSEM100N
125	5"	85	1.415	AMSEM125G	AMSEM125N
150	6"	100	2.115	AMSEM150G	AMSEM150N

Embouts mâles -316L- longueur 100 mm

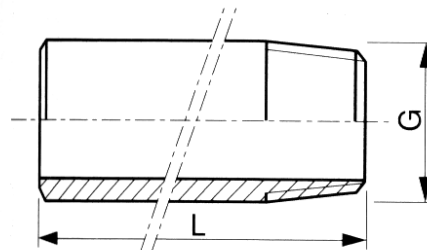
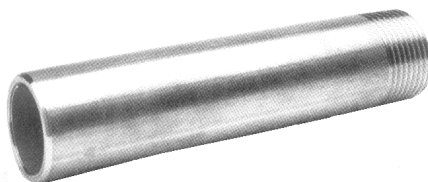
AMSEML



DN	G	Poids (kg)	Référence GAZ/BSP	Référence NPT/BRIGGS
5	1/8"	0.040	AMSEML5G	AMSEML5N
8	1/4"	0.065	AMSEML8G	AMSEML8N
12	3/8"	0.080	AMSEML12G	AMSEML12N
15	1/2"	0.110	AMSEML15G	AMSEML15N
20	3/4"	0.135	AMSEML20G	AMSEML20N
25	1"	0.215	AMSEML25G	AMSEML25N
32	1"1/4	0.290	AMSEML32G	AMSEML32N
40	1"1/2	0.310	AMSEML40G	AMSEML40N
50	2"	0.440	AMSEML50G	AMSEML50N
65	2"1/2	0.520	AMSEML65G	AMSEML65N
80	3"	0.975	AMSEML80G	AMSEML80N
100	4"	1.340	AMSEML100G	AMSEML100N

Embouts mâles -316L- longueur 150 mm

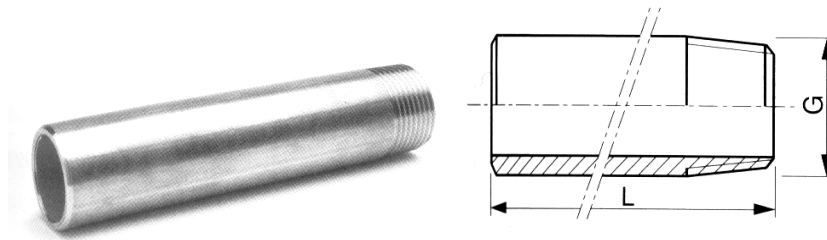
AMSEML



DN	G	Poids (kg)	Référence GAZ/BSP	Référence NPT/BRIGGS
5	1/8"	0.058	AMSEML155G	AMSEML155N
8	1/4"	0.095	AMSEML158G	AMSEML158N
12	3/8"	0.115	AMSEML1512G	AMSEML1512N
15	1/2"	0.145	AMSEML1515G	AMSEML1515N
20	3/4"	0.225	AMSEML1520G	AMSEML1520N
25	1"	0.340	AMSEML1525G	AMSEML1525N
32	1"1/4	0.430	AMSEML1532G	AMSEML1532N
40	1"1/2	0.475	AMSEML1540G	AMSEML1540N
50	2"	0.735	AMSEML1550G	AMSEML1550N
65	2"1/2	0.885	AMSEML1565G	AMSEML1565N
80	3"	1.510	AMSEML1580G	AMSEML1580N
100	4"	2.000	AMSEML15100G	AMSEML15100N

Embouts mâles -316L- longueur 200 mm

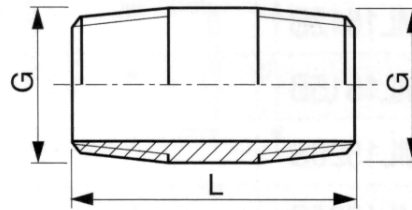
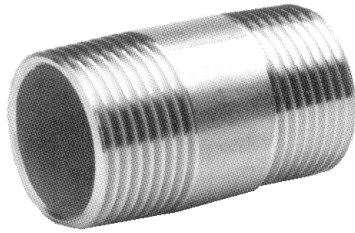
AMSEML



DN	G	Poids (kg)	Référence GAZ/BSP	Référence NPT/BRIGGS
5	1/8"	0.080	AMSEML205G	AMSEML205N
8	1/4"	0.125	AMSEML208G	AMSEML208N
12	3/8"	0.160	AMSEML2012G	AMSEML2012N
15	1/2"	0.235	AMSEML2015G	AMSEML2015N
20	3/4"	0.300	AMSEML2020G	AMSEML2020N
25	1"	0.460	AMSEML2025G	AMSEML2025N
32	1"1/4	0.575	AMSEML2032G	AMSEML2032N
40	1"1/2	0.655	AMSEML2040G	AMSEML2040N
50	2"	0.930	AMSEML2050G	AMSEML2050N
65	2"1/2	1.185	AMSEML2065G	AMSEML2065N
80	3"	2.060	AMSEML2080G	AMSEML2080N
100	4"	2.605	AMSEML20100G	AMSEML20100N

Mamelons tubes -316L- longueur standard

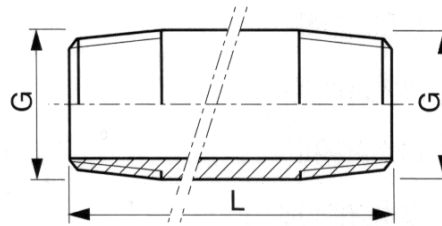
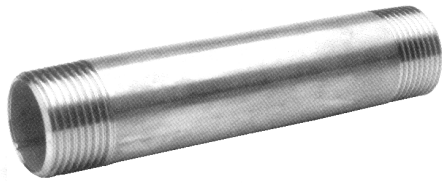
AMSMC



DN	G	L	Poids (kg)	Référence GAZ/BSP	Référence NPT/BRIGGS
5	1/8"	31	0.010	AMSMC5G	AMSMC5N
8	1/4"	36	0.020	AMSMC8G	AMSMC8N
12	3/8"	39	0.020	AMSMC12G	AMSMC12N
15	1/2"	42	0.040	AMSMC15G	AMSMC15N
20	3/4"	50	0.050	AMSMC20G	AMSMC20N
25	1"	56	0.100	AMSMC25G	AMSMC25N
32	1"1/4	58	0.140	AMSMC32G	AMSMC32N
40	1"1/2	62	0.155	AMSMC40G	AMSMC40N
50	2"	74	0.270	AMSMC50G	AMSMC50N
65	2"1/2	80	0.360	AMSMC65G	AMSMC65N
80	3"	100	0.905	AMSMC80G	AMSMC80N
100	4"	120	1.475	AMSMC100G	AMSMC100N
125	5"			AMSMC125G	
150	6"			AMSMC150G	

Mamelons tubes -316L- longueur 100 mm

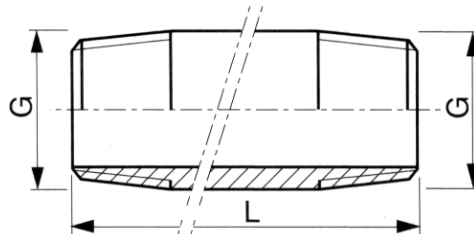
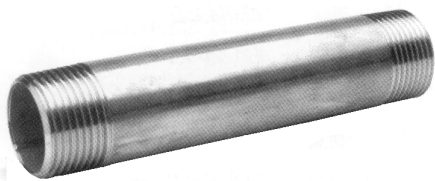
AMSMCL



DN	G	Poids (kg)	Référence GAZ/BSP	Référence NPT/BRIGGS
5	1/8"	0.040	AMSMCL5G	AMSMCL5N
8	1/4"	0.060	AMSMCL8G	AMSMCL8N
12	3/8"	0.070	AMSMCL12G	AMSMCL12N
15	1/2"	0.105	AMSMCL15G	AMSMCL15N
20	3/4"	0.135	AMSMCL20G	AMSMCL20N
25	1"	0.200	AMSMCL25G	AMSMCL25N
32	1"1/4	0.270	AMSMCL32G	AMSMCL32N
40	1"1/2	0.275	AMSMCL40G	AMSMCL40N
50	2"	0.395	AMSMCL50G	AMSMCL50N
65	2"1/2	0.510	AMSMCL65G	AMSMCL65N
80	3"	0.905	AMSMCL80G	AMSMCL80N

Mamelons tubes -316L- longueur 150 mm

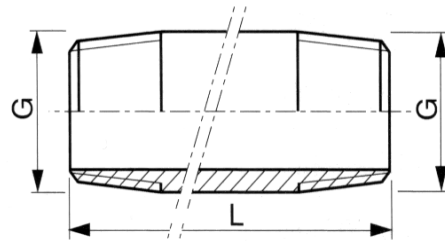
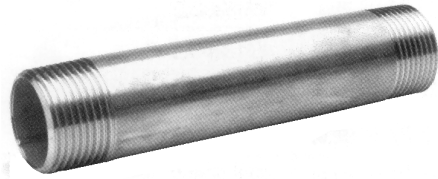
AMSMCL



DN	G	Poids (kg)	Référence GAZ/BSP	Référence NPT/BRIGGS
5	1/8"	0.058	AMSMCL155G	AMSMCL155N
8	1/4"	0.090	AMSMCL158G	AMSMCL158N
12	3/8"	0.110	AMSMCL1512G	AMSMCL1512N
15	1/2"	0.150	AMSMCL1515G	AMSMCL1515N
20	3/4"	0.210	AMSMCL1520G	AMSMCL1520N
25	1"	0.315	AMSMCL1525G	AMSMCL1525N
32	1"1/4	0.400	AMSMCL1532G	AMSMCL1532N
40	1"1/2	0.465	AMSMCL1540G	AMSMCL1540N
50	2"	0.635	AMSMCL1550G	AMSMCL1550N
65	2"1/2	0.790	AMSMCL1565G	AMSMCL1565N
80	3"	1.405	AMSMCL1580G	AMSMCL1580N
100	4"	1.850	AMSMCL15100G	AMSMCL15100N

Mamelons tubes -316L- longueur 200 mm

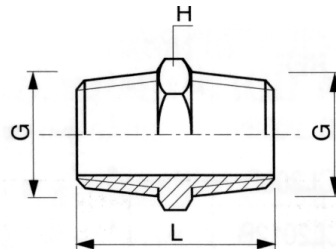
AMSMCL



DN	G	Poids (kg)	Référence GAZ/BSP	Référence NPT/BRIGGS
5	1/8"	0.080	AMSMCL205G	AMSMCL205N
8	1/4"	0.125	AMSMCL208G	AMSMCL208N
12	3/8"	0.155	AMSMCL2012G	AMSMCL2012N
15	1/2"	0.190	AMSMCL2015G	AMSMCL2015N
20	3/4"	0.290	AMSMCL2020G	AMSMCL2020N
25	1"	0.435	AMSMCL2025G	AMSMCL2025N
32	1"1/4	0.550	AMSMCL2032G	AMSMCL2032N
40	1"1/2	0.670	AMSMCL2040G	AMSMCL2040N
50	2"	0.880	AMSMCL2050G	AMSMCL2050N
65	2"1/2	1.185	AMSMCL2065G	AMSMCL2065N
80	3"	1.960	AMSMCL2080G	AMSMCL2080N
100	4"	2.655	AMSMCL20100G	AMSMCL20100N

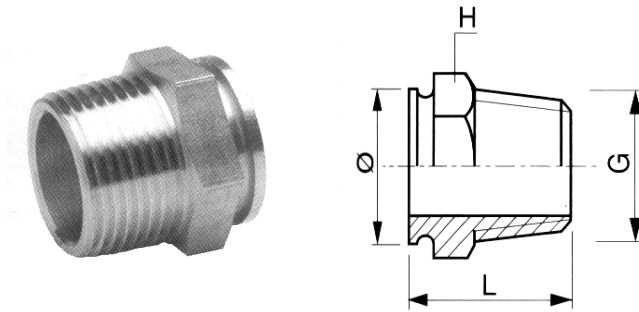
Mamelons Hexagonaux 316

AMSMH



DN	G	L	H	Poids (kg)	Référence GAZ/BSP	Référence NPT/BRIGGS
5	1/8"	25	12	0.010	AMSMH5G	AMSMH5N
8	1/4"	33	15	0.015	AMSMH8G	AMSMH8N
12	3/8"	35	20	0.025	AMSMH12G	AMSMH12N
15	1/2"	42	23	0.045	AMSMH15G	AMSMH15N
20	3/4"	48	29	0.070	AMSMH20G	AMSMH20N
25	1"	52	36	0.150	AMSMH25G	AMSMH25N
32	1"1/4	58	46	0.260	AMSMH32G	AMSMH32N
40	1"1/2	58	52	0.275	AMSMH40G	AMSMH40N
50	2"	64	63	0.420	AMSMH50G	AMSMH50N
65	2"1/2	74	80	0.515	AMSMH65G	
80	3"	86	95	0.670	AMSMH80G	

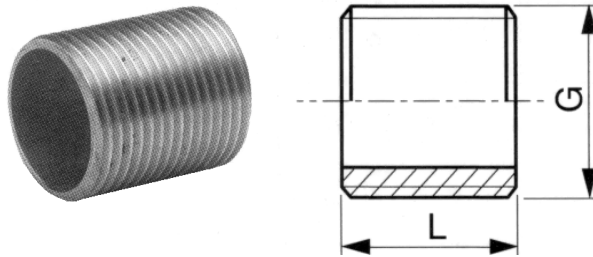
Mamelons Hexagonaux à souder 316L pour flexibles AMSMHS



DN	G	L	Ø	H	Poids (kg)	Référence GAZ/BSP	Référence NPT/BRIGGS
5	1/8"					AMSMHS5G	AMSMHS5 N
8	1/4"	20	13.5	14	0.010	AMSMHS8G	AMSMHS8N
12	3/8"	22.5	17.2	19	0.020	AMSMHS12G	AMSMHS12N
15	1/2"	25	21.3	23	0.035	AMSMHS15G	AMSMHS15N
20	3/4"	31.5	26.9	27	0.060	AMSMHS20G	AMSMHS20N
25	1"	36	33.7	36	0.110	AMSMHS25G	AMSMHS25N
32	1"1/4	38	42.4	46	0.175	AMSMHS32G	AMSMHS32N
40	1"1/2	39	48.3	50	0.180	AMSMHS40G	AMSMHS40N
50	2"	43	60.3	65	0.340	AMSMHS50G	AMSMHS50N
65	2"1/2	44	76.1	78	0.420	AMSMHS65G	
80	3"	50	88.9	92	0.525	AMSMHS80G	
100	4"	58	114.3	118	1.030	AMSMHS100G	

Bobines entièrement filetées 316L

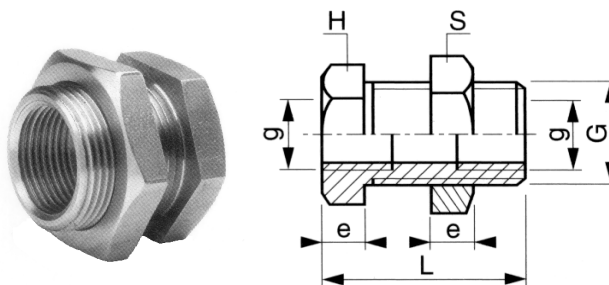
AMSBOB



DN	G	Standard L			Longueur 100 mm	
		L	Poids (kg)	Référence GAZ/BSP	Poids (kg)	Référence
5	1/8"	16	0.005	AMSBOB5G	0.030	AMSBOBL5G
8	1/4"	18	0.005	AMSBOB8G	0.040	AMSBOBL8G
12	3/8"	22	0.010	AMSBOB12G	0.060	AMSBOBL12G
15	1/2"	25	0.015	AMSBOB15G	0.070	AMSBOBL15G
20	3/4"	30	0.030	AMSBOB20G	0.090	AMSBOBL20G
25	1"	37	0.050	AMSBOB25G	0.140	AMSBOBL25G
32	1"1/4	37	0.065	AMSBOB32G	0.160	AMSBOBL32G
40	1"1/2	38	0.080	AMSBOB40G	0.200	AMSBOBL40G
50	2"	45	0.130	AMSBOB50G	0.300	AMSBOBL50G
65	2"1/2	55	0.290	AMSBOB65G	0.380	
80	3"	60	0.365	AMSBOB80G	0.560	

Traversées de cloison 316L

AMSTC

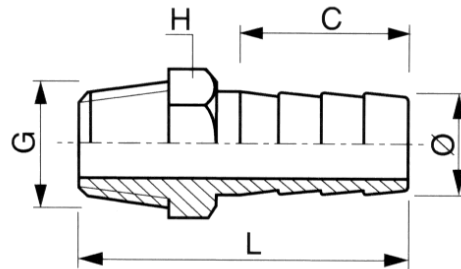


DN	g	G	e	H	S	L	Poids (kg)	Référence GAZ/BSP
8	1/4"	1/2"	8	27	30	35	0.100	AMSTC8G
12	3/8"	1/2"	8	27	30	35	0.090	AMSTC12G
15	1/2"	3/4"	9	32	36	40	0.130	AMSTC15G
20	3/4"	1"	10	38	46	40	0.210	AMSTC20G
25	1"	1"1/4	11	50	55	45	0.350	AMSTC25G
32	1"1/4	1"1/2	12	60	60	50	0.420	AMSTC32G
40	1"1/2	2"	12	70	75	54	0.780	AMSTC40G

RACCORD CANNELE

Adaptateurs hexagonaux mâles 316

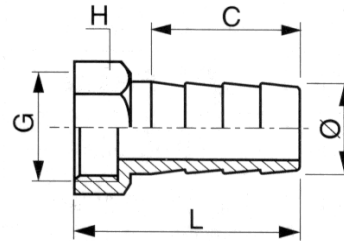
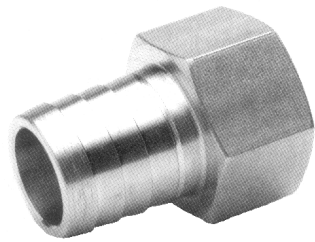
AMSAH



DN	G	Ø	L	C	H	Poids (kg)	Référence
5	1/8"	7	33	16	12	0.015	AMSAH5G
8	1/4"	9	44	20	14	0.025	AMSAH8G
12	3/8"	11	46	20	19	0.045	AMSAH12G
15	1/2"	15	51	24	22	0.090	AMSAH15G
20	3/4"	20	58	28	27	0.140	AMSAH20G
25	1"	27	65	28	36	0.220	AMSAH25G
32	1"1/4	34	72	36	46	0.415	AMSAH32G
40	1"1/2	40	84	40	50	0.465	AMSAH40G
50	2"	52	100	50	65	0.605	AMSAH50G

Adaptateurs hexagonaux femelles 316L

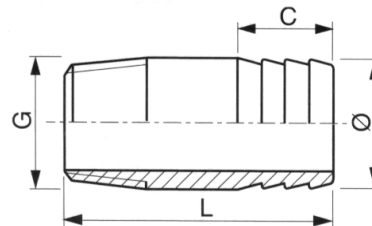
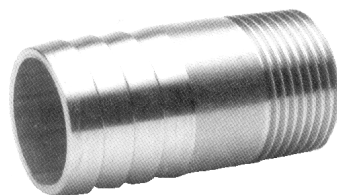
AMSAF



DN	G	Ø	L	C	H	Poids (kg)	Référence Gaz/BSP
5	1/8"	7	28	16	12	0.030	AMSAF5G
8	1/4"	9	33	20	17	0.050	AMSAF8G
12	3/8"	11	39	20	21	0.100	AMSAF12G
15	1/2"	15	44	24	24	0.150	AMSAF15G
20	3/4"	20	50	28	30	0.250	AMSAF20G
25	1"	27	52	28	36	0.500	AMSAF25G
32	1"1/4	34	59	36	46	0.600	AMSAF32G
40	1"1/2	40	75	40	55	0.715	AMSAF40G
50	2"	52	89	50	65	0.905	AMSAF50G

Adaptateurs mâles 316L

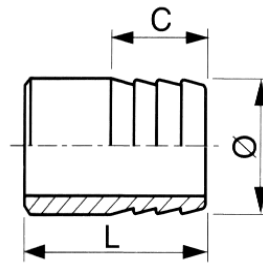
AMSAM



DN	G	Ø	L	C	Poids (kg)	Référence Gaz/BSP
8	1/4"	13.5	42	16	0.025	AMSAM8G
12	3/8"	17.2	47	20	0.030	AMSAM12G
15	1/2"	21.3	53	20	0.050	AMSAM15G
20	3/4"	26.9	57	20	0.070	AMSAM20G
25	1"	33.7	65	28	0.125	AMSAM25G
32	1"1/4	42.4	68	32	0.155	AMSAM32G
40	1"1/2	48.3	74	32	0.210	AMSAM40G
50	2"	60.3	82	36	0.300	AMSAM50G
65	2"1/2	76.1	104	50	0.530	AMSAM65G
80	3"	88.9	130	60	1.235	AMSAM80G
100	4"	114.3	154	68	2.080	AMSAM100G

Adaptateurs lisses simple 316L

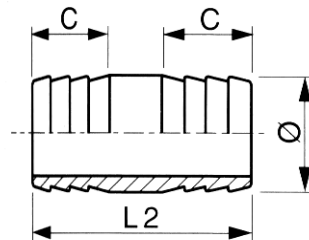
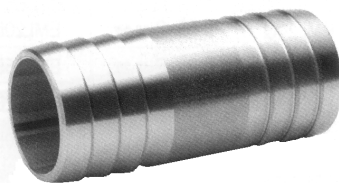
AMSAL



DN	Ø	L	C	Poids (kg)	Référence
5	10.2	30	16	0.010	AMSAL5G
8	13.5	30	16	0.020	AMSAL8G
12	17.2	35	20	0.025	AMSAL12G
15	21.3	40	20	0.045	AMSAL15G
20	26.9	40	20	0.065	AMSAL20G
25	33.7	45	28	0.095	AMSAL25G
32	42.4	55	32	0.155	AMSAL32G
40	48.3	55	32	0.175	AMSAL40G
50	60.3	60	36	0.270	AMSAL50G
65	76.1	80	50	0.450	AMSAL65G
80	88.9	100	60	0.995	AMSAL80G
100	114.3	120	66	1.670	AMSAL100G

Adaptateurs lisses double 316L

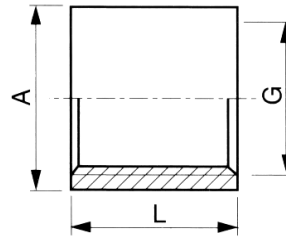
AMSALD



DN	Ø	C	L2	Poids (kg)	Référence
5	10.2	16	46	0.028	AMSALD5G
8	13.5	16	46	0.030	AMSALD8G
12	17.2	20	55	0.055	AMSALD12G
15	21.3	20	60	0.060	AMSALD15G
20	26.9	20	60	0.072	AMSALD20G
25	33.7	28	75	0.150	AMSALD25G
32	42.4	32	90	0.180	AMSALD32G
40	48.3	32	90	0.270	AMSALD40G
50	60.3	36	96	0.90	AMSALD50G
65	76.1	50	130	0.650	AMSALD65G
80	88.9	60	160	1.600	AMSALD80G
100	114.3	66	185	2.590	AMSALD100G

Manchons gaz Din 2986 inox 316

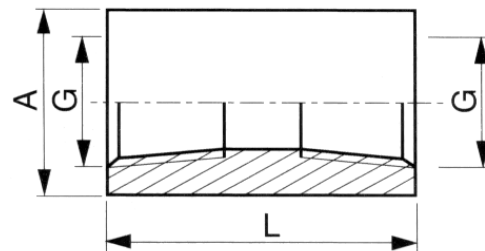
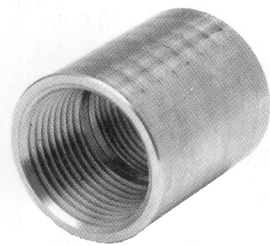
AMSM



DN	G	A	L	Poids (kg)	Référence
5	1/8"	14	19	0.015	AMSM5G
8	1/4"	17.2	25	0.020	AMSM8G
12	3/8"	21.3	26	0.035	AMSM12G
15	1/2"	26.9	34	0.065	AMSM15G
20	3/4"	32	36	0.085	AMSM20G
25	1"	40	43	0.145	AMSM25G
32	1"1/4	48.3	48	0.195	AMSM32G
40	1"1/2	55	48	0.230	AMSM40G
50	2"	67	56	0.335	AMSM50G
65	2"1/2	85	65	0.525	AMSM65G
80	3"	95	72	0.655	AMSM80G
100	4"	122	82	1.170	AMSM100G
125	5"	150	85	2.195	AMSM125G
150	6"	180	110	4.725	AMSM150G

Manchons NPT 316L

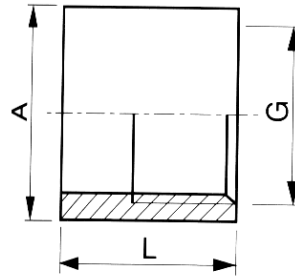
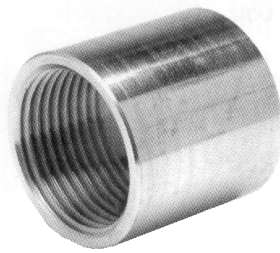
AMSM



DN	G	A	L	Poids (kg)	Référence
5	1/8"	14	25	0.020	AMSM5N
8	1/4"	18	28	0.030	AMSM8N
12	3/8"	22	32	0.045	AMSM12N
15	1/2"	25	36	0.055	AMSM15N
20	3/4"	32	42	0.115	AMSM20N
25	1"	38	45	0.140	AMSM25N
32	1"1/4	50	55	0.325	AMSM32N
40	1"1/2	55	55	0.325	AMSM40N
50	2"	65	60	0.360	AMSM50N

Embout femelles 316L

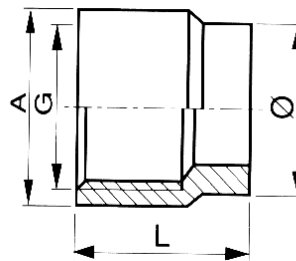
AMSEF



DN	G	L	A	Poids (kg)	Référence GAZ/BSP	Référence NPT/BRIGGS
5	1/8"	18	14	0.010	AMSEF5G	AMSEF5N
8	1/4"	22	18	0.025	AMSEF8G	AMSEF8N
12	3/8"	25	22	0.035	AMSEF12G	AMSEF12N
15	1/2"	28	25	0.040	AMSEF15G	AMSEF15N
20	3/4"	32	30	0.075	AMSEF20G	AMSEF20N
25	1"	36	38	0.110	AMSEF25G	AMSEF25N
32	1"1/4	36	50	0.210	AMSEF32G	AMSEF32N
40	1"1/2	40	55	0.225	AMSEF40G	AMSEF40N
50	2"	40	65	0.265	AMSEF50G	AMSEF50N
65	2"1/2	55	85	0.640	AMSEF65G	
80	3"	70	95	0.600	AMSEF80G	
100	4"	80	122		AMSEF100G	

Bossages 316L

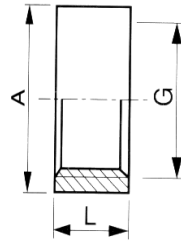
AMSBO



DN	Ø	G	L	A	Poids (kg)	Référence GAZ/BSP
8	13.5	1/4"	22	18	0.025	AMSBO8G
12	17.2	3/8"	30	22	0.045	AMSBO12G
15	21.3	1/2"	30	25	0.050	AMSBO15G
20	26.9	3/4"	30	32	0.070	AMSBO20G
25	33.7	1"	35	38	0.110	AMSBO25G
32	42.4	1"1/4	38	50	0.230	AMSBO32G
40	48.3	1"1/2	40	60	0.340	AMSBO40G
50	60.3	2"	40	70	0.370	AMSBO50G

Demi-manchons 316

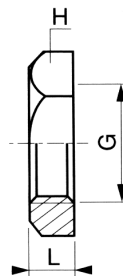
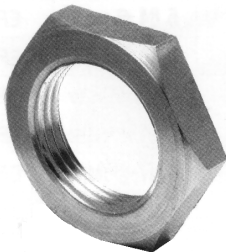
AMSDM



DN	G	L	A	Poids (kg)	Référence GAZ/BSP
5	1/8"	9	14	0.005	AMSDM5G
8	1/4"	11	18	0.010	AMSDM8G
12	3/8"	13	21	0.015	AMSDM12G
15	1/2"	15	26	0.030	AMSDM15G
20	3/4"	17	31	0.035	AMSDM20G
25	1"	19	39	0.050	AMSDM25G
32	1"1/4	22	48	0.070	AMSDM32G
40	1"1/2	23	54	0.080	AMSDM40G
50	2"	26	66	0.150	AMSDM50G
65	2"1/2	31	82	0.245	AMSDM65G
80	3"	33	95	0.310	AMSDM80G

Ecrous hexagonaux 316L

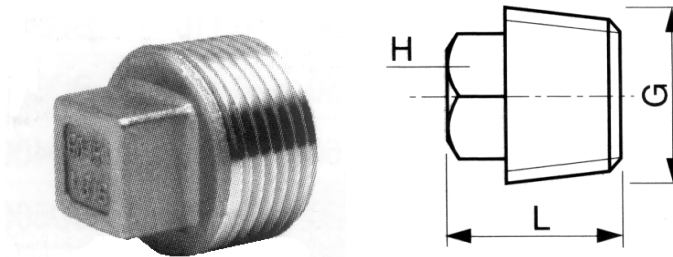
AMSEH



DN	G	L	H	Poids (kg)	Référence GAZ/BSP
5	1/8"	6	19	0.010	AMSEH5G
8	1/4"	6	22	0.015	AMSEH8G
12	3/8"	7	27	0.025	AMSEH12G
15	1/2"	8	30	0.030	AMSEH15G
20	3/4"	9	36	0.040	AMSEH20G
25	1"	10	46	0.080	AMSEH25G
32	1"1/4	11	55	0.110	AMSEH32G
40	1"1/2	12	60	0.150	AMSEH40G
50	2"	12	75	0.220	AMSEH50G
65	2"1/2	16	95	0.420	AMSEH65G
80	3"	19	105	0.485	AMSEH80G
100	4"	22	124	0.550	AMSEH100G

Bouchons mâles tête carrée 316

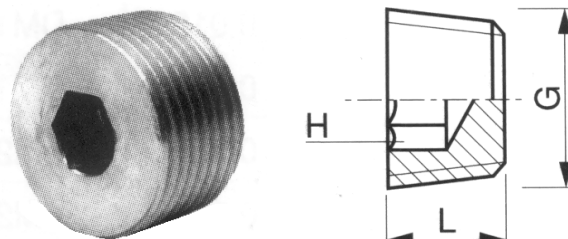
AMSBC



DN	G	L	H	Poids (kg)	Référence GAZ/BSP	Référence NPT/BRIGGS
5	1/8"	15	7	0.005	AMSBC5G	AMSBC5N
8	1/4"	18	8	0.015	AMSBC8G	AMSBC8N
12	3/8"	20	10	0.025	AMSBC12G	AMSBC12N
15	1/2"	22	12	0.045	AMSBC15G	AMSBC15N
20	3/4"	27	14	0.080	AMSBC20G	AMSBC20N
25	1"	32	19	0.160	AMSBC25G	AMSBC25N
32	1"1/4	34	27	0.295	AMSBC32G	AMSBC32N
40	1"1/2	38	30	0.420	AMSBC40G	AMSBC40N
50	2"	40	32	0.620	AMSBC50G	AMSBC50N

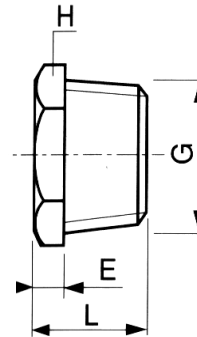
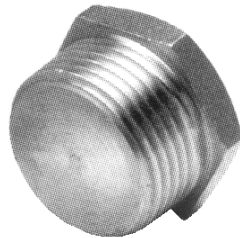
Bouchons mâles hexagone creux 316L

AMSBHC



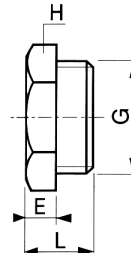
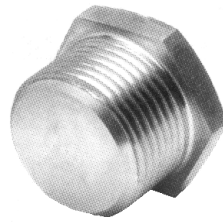
DN	G	L	H	Poids (kg)	Référence GAZ/BSP	Référence NPT/BRIGGS
5	1/8"	8	5	0.005	AMSBHC5G	AMSBHC5N
8	1/4"	11	6	0.010	AMSBHC8G	AMSBHC8N
12	3/8"	12	8	0.015	AMSBHC12G	AMSBHC12N
15	1/2"	15	10	0.030	AMSBHC15G	AMSBHC15N
20	3/4"	17	12	0.055	AMSBHC20G	AMSBHC20N
25	1"	19	12	0.105	AMSBHC25G	AMSBHC25N
32	1"1/4	22	12	0.135	AMSBHC32G	
40	1"1/2	22	17	0.260	AMSBHC40G	
50	2"	25	22	0.450	AMSBHC50G	

Bouchons mâles tête hexagonale -316L- AMSBM



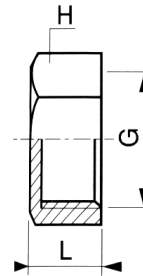
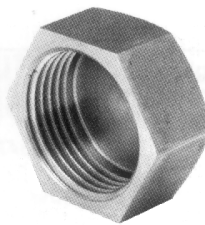
DN	G	L GAZ/NPT	E	H	Poids (kg)	Référence GAZ/BSP	Référence NPT/BRIGGS
5	1/8"	13	5	10	0.010	AMSBM5G	AMSBM5N
8	1/4"	15/16	5	14	0.015	AMSBM8G	AMSBM8N
12	3/8"	15/16	5	19	0.030	AMSBM12G	AMSBM12N
15	1/2"	20/21	7	23	0.055	AMSBM15G	AMSBM15N
20	3/4"	22/23	7	27	0.095	AMSBM20G	AMSBM20N
25	1"	23/25	7	36	0.165	AMSBM25G	AMSBM25N
32	1"1/4	27/28	8	46	0.310	AMSBM32G	AMSBM32N
40	1"1/2	30/32	10	50	0.440	AMSBM40G	AMSBM40N
50	2"	34/36	11	65	0.795	AMSBM50G	AMSBM50N
65	2"1/2	37	12	78	1.340	AMSBM65G	AMSBM65N
80	3"	42	12	92	2.115	AMSBM80G	AMSBM80N
100	4"	47	12	118	3.840	AMSBM100G	AMSBM100N

Bouchons mâles tête hexagonale -316L- Gaz cylindrique à portée de joint AMSBM



DN	G	L	E	H	Poids (kg)	Référence GAZ/BSP
5	1/8"	16	5	14	0.015	AMSBM5GC
8	1/4"	13	5	17	0.020	AMSBM8GC
12	3/8"	15	5	24	0.035	AMSBM12GC
15	1/2"	18	7	27	0.060	AMSBM15GC
20	3/4"	22	7	32	0.090	AMSBM20GC
25	1"	27	7	38	0.195	AMSBM25GC
32	1"1/4	28	8	50	0.330	AMSBM32GC
40	1"1/2	30	9	60	0.680	AMSBM40GC
50	2"	34	11	70	0.825	AMSBM50GC

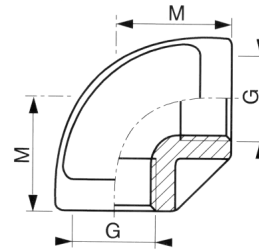
Bouchons femelles -316L- AMSBF



DN	G	L GAZ/NPT	H	Poids (kg)	Référence GAZ/BSP	Référence NPT/BRIGGS
5	1/8"	10	13	0.005	AMSBF5G	AMSBF5N
8	1/4"	10/12	17	0.010	AMSBF8G	AMSBF8N
12	3/8"	12/16	21	0.020	AMSBF12G	AMSBF12N
15	1/2"	14/18	24	0.025	AMSBF15G	AMSBF15N
20	3/4"	16/18	30	0.050	AMSBF20G	AMSBF20N
25	1"	17/22	38	0.075	AMSBF25G	AMSBF25N
32	1"1/4	19/22	46	0.110	AMSBF32G	AMSBF32N
40	1"1/2	23/26	55	0.220	AMSBF40G	AMSBF40N
50	2"	25/26	65	0.260	AMSBF50G	AMSBF50N
65	2"1/2	29	84	0.520	AMSBF65G	
80	3"	34	95	0.670	AMSBF80G	
100	4"	40	124	1.270	AMSBF100G	

Coudes à 90° femelle femelle 316

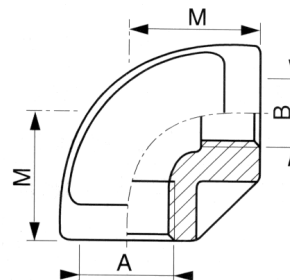
AMSCFF



DN	G	M	Poids (kg)	Référence GAZ/BSP	Référence NPT/BRIGGS
5	1/8"	17	0.040	AMSCFF5G	
8	1/4"	20	0.060	AMSCFF8G	AMSCFF8N
12	3/8"	24	0.090	AMSCFF12G	AMSCFF12N
15	1/2"	28	0.105	AMSCFF15G	AMSCFF15N
20	3/4"	32	0.175	AMSCFF20G	AMSCFF20N
25	1"	38	0.315	AMSCFF25G	AMSCFF25N
32	1"1/4	45	0.465	AMSCFF32G	AMSCFF32N
40	1"1/2	50	0.600	AMSCFF40G	AMSCFF40N
50	2"	58	1.005	AMSCFF50G	AMSCFF50N
65	2"1/2	70	1.840	AMSCFF65G	
80	3"	78	2.730	AMSCFF80G	
100	4"	97	4.850	AMSCFF100G	

Coudes à 90° femelle femelle réduits 316

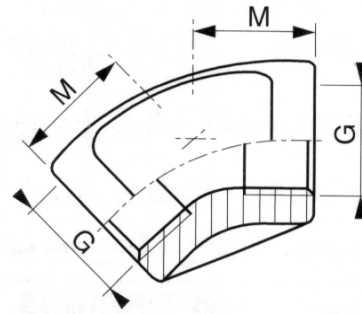
AMSCFFR



DN	A	B	M	Poids (kg)	Référence GAZ/BSP
8/5	1/4"	1/8"	20	0.060	AMSCFFR85G
12/8	3/8"	1/4"	24	0.080	AMSCFFR128G
15/12	1/2"	3/8"	28	0.110	AMSCFFR1512G
20/15	3/4"	1/2"	32	0.200	AMSCFFR2015G
25/20	1"	3/4"	38	0.280	AMSCFFR2520G
32/25	1"1/4	1"	45	0.460	AMSCFFR3225G
40/32	1"1/2	1"1/4	50	0.640	AMSCFFR4032G
50/40	2"	1"1/2	58	0.850	AMSCFFR5040G

Coudes à 45° femelle femelle 316

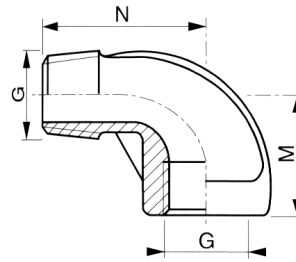
AMSCFF



DN	G	M	Poids (kg)	Référence GAZ/BSP
5	1/8"	15	0.045	AMSCFF455G
8	1/4"	18	0.060	AMSCFF458G
12	3/8"	20	0.080	AMSCFF4512G
15	1/2"	24	0.110	AMSCFF4515G
20	3/4"	26	0.200	AMSCFF4520G
25	1"	30	0.280	AMSCFF4525G
32	1"1/4	35	0.460	AMSCFF4532G
40	1"1/2	38	0.640	AMSCFF4540G
50	2"	40	0.850	AMSCFF4550G
65	2"1/2	50	1.330	AMSCF4565G
80	3"	55	1.470	AMSCFF4580G
100	4"			AMSCFF45100G

Coudes à 90° mâle femelle 316

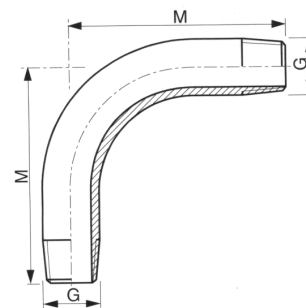
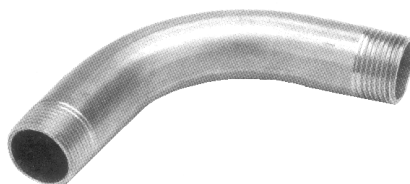
AMSCMF



DN	G	M	N	Poids (kg)	Référence GAZ/BSP	Référence NPT/BRIGGS
5	1/8"	17	26	0.030	AMSCMF5G	
8	1/4"	20	28	0.045	AMSCMF8G	AMSCMF8N
12	3/8"	24	36	0.075	AMSCMF12G	AMSCMF12N
15	1/2"	28	40	0.115	AMSCMF15G	AMSCMF15N
20	3/4"	32	46	0.180	AMSCMF20G	AMSCMF20N
25	1"	38	54	0.285	AMSCMF25G	AMSCMF25N
32	1"1/4	45	62	0.550	AMSCMF32G	AMSCMF32N
40	1"1/2	50	69	0.720	AMSCMF40G	AMSCMF40N
50	2"	58	80	1.030	AMSCMF50G	AMSCMF50N
65	2"1/2	70	98	1.950	AMSCMF65G	
80	3"	78	112	2.940	AMSCMF80G	
100	4"	97	132	4.800	AMSCMF100G	

Coudes à 90° mâles mâles grand rayon 316

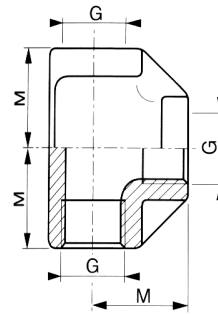
AMSCMM



DN	G	M	Poids (kg)	Référence GAZ/BSP
5	1/8"	65	0.030	AMSCMM5G
8	1/4"	60	0.070	AMSCMM8G
12	3/8"	70	0.100	AMSCMM12G
15	1/2"	80	0.140	AMSCMM15G
20	3/4"	100	0.240	AMSCMM20G
25	1"	120	0.430	AMSCMM25G
32	1"1/4	140	0.900	AMSCMM32G
40	1"1/2	160	1.070	AMSCMM40G
50	2"	190	1.880	AMSCMM50G
65	2"1/2	220		AMSCMM65G
80	3"	260		AMSCMM80G

Tés F.F.F. 316

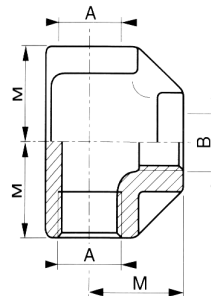
AMSTE



DN	G	M	Poids (kg)	Référence GAZ/BSP	Référence NPT/BRIGGS
5	1/8"	17	0.050	AMSTE5G	AMSTE5N
8	1/4"	20	0.080	AMSTE8G	AMSTE8N
12	3/8"	24	0.120	AMSTE12G	AMSTE12N
15	1/2"	28	0.170	AMSTE15G	AMSTE15N
20	3/4"	32	0.235	AMSTE20G	AMSTE20N
25	1"	38	0.435	AMSTE25G	AMSTE25N
32	1"1/4	45	0.675	AMSTE32G	AMSTE32N
40	1"1/2	50	0.820	AMSTE40G	AMSTE40N
50	2"	58	1.575	AMSTE50G	AMSTE50N
65	2"1/2	70	2.175	AMSTE65G	
80	3"	78	3.950	AMSTE80G	
100	4"	97	6.650	AMSTE100G	

Tés F.F.F. réduits 316

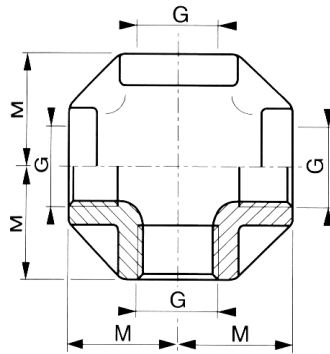
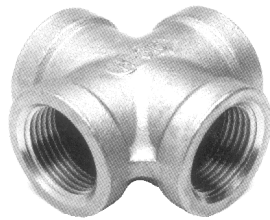
AMSTER



DN	A	B	M	Poids (kg)	Référence GAZ/BSP
8/5	1/4"	1/8"	20	0.080	AMSTER85G
12/8	3/8"	1/4"	24	0.120	AMSTER128G
15/12	1/2"	3/8"	28	0.170	AMSTER1512G
20/15	3/4"	1/2"	32	0.235	AMSTER2015G
25/20	1"	3/4"	38	0.435	AMSTER2520G
32/25	1"1/4	1"	45	0.675	AMSTER3225G
40/32	1"1/2	1"1/4	50	0.820	AMSTER4032G
50/40	2"	1"1/2	58	1.575	AMSTER5040G

Croix taraudées 316

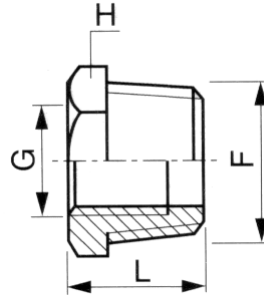
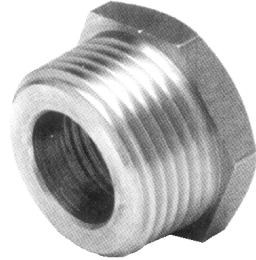
AMSCX



DN	G	M	Poids (kg)	Référence GAZ/BSP	Référence NPT/BRIGGS
5	1/8"	17	0.075	AMSCX5G	AMSCX5N
8	1/4"	20	0.115	AMSCX8G	AMSCX8N
12	3/8"	24	0.155	AMSCX12G	AMSCX12N
15	1/2"	28	0.280	AMSCX15G	AMSCX15N
20	3/4"	32	0.365	AMSCX20G	AMSCX20N
25	1"	38	0.545	AMSCX25G	AMSCX25N
32	1"1/4	45	0.825	AMSCX32G	AMSCX32N
40	1"1/2	50	1.050	AMSCX40G	AMSCX40N
50	2"	58	1.735	AMSCX50G	AMSCX50N
65	2"1/2	70	2.320	AMSCX65G	
80	3"	78	4.065	AMSCX80G	

Réductions mâle femelle 316L

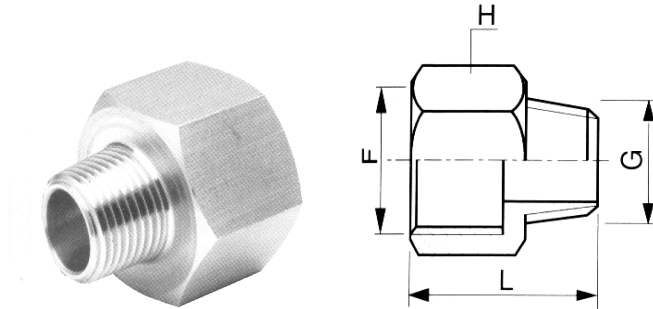
AMSRMF



DN	F	G	L	H	Poids (kg)	Référence GAZ/BSP	Référence NPT/BRIGGS
8/5	1/4"	1/8"	13	14	0.010	AMSRMF85G	AMSRMF85N
12/8	3/8"	1/4"	15	19	0.020	AMSRMF128G	AMSRMF128N
12/5	3/8"	1/8"	15	19	0.020	AMSRMF125G	AMSRMF125N
15/12	1/2"	3/8"	18	23	0.025	AMSRMF1512G	AMSRMF1512N
15/8	1/2"	1/4"	18	23	0.035	AMSRMF158G	AMSRMF158N
15/5	1/2"	1/8"	18	23	0.045	AMSRMF155G	AMSRMF155N
20/15	3/4"	1/2"	22	27	0.040	AMSRMF2015G	AMSRMF2015N
20/12	3/4"	3/8"	22	27	0.060	AMSRMF2012G	AMSRMF2012N
20/8	3/4"	1/4"	22	27	0.070	AMSRMF208G	AMS RMF208N
20/5	3/4"	1/8"	22	27	0.080	AMSRMF205G	
25/20	1"	3/4"	23	36	0.075	AMSRMF2520G	AMS RMF2520N
25/15	1"	1/2"	23	36	0.105	AMSRMF2515G	
25/12	1"	3/8"	23	36	0.125	AMSRMF2512G	
25/8	1"	1/4"	23	36	0.165	AMSRMF258G	
32/25	1"1/4	1"	27	46	0.135	AMSRMF3225G	
32/20	1"1/4	3/4"	27	46	0.220	AMSRMF3220G	
32/15	1"1/4	1/2"	27	46	0.245	AMSRMF3215G	
32/12	1"1/4	3/8"	27	46	0.250	AMSRMF3212G	
40/32	1"1/2	1"1/4	30	50	0.130	AMSRMF4032G	
40/25	1"1/2	1"	30	50	0.265	AMSRMF4025G	
40/20	1"1/2	3/4"	30	50	0.340	AMSRMF4020G	
40/15	1"1/2	1/2"	30	50	0.365	AMSRMF4015G	
50/40	2"	1"1/2	34	65	0.350	AMSRMF5040G	
50/32	2"	1"1/4	34	65	0.445	AMSRMF5032G	
50/25	2"	1"	34	65	0.580	AMSRMF5025G	
50/20	2"	3/4"	34	65	0.600	AMSRMF5020G	
50/15	2"	1/2"	34	65	0.600	AMSRMF5015G	
65/50	2"1/2	2"	37	78	0.870	AMSRMF6550G	
65/40	2"1/2	1"1/2	37	78	0.900	AMSRMF6540G	
65/32	2"1/2	1"1/4	37	78	0.950	AMSRMF6532G	
65/25	2"1/2	1"	37	78	0.950	AMS RMF6525G	
80/65	3"	2"1/2	42	92	0.615	AMSRMF8065G	
80/50	3"	2"	42	92	1.225	AMSRMF8050G	

Réductions femelle mâle 316L

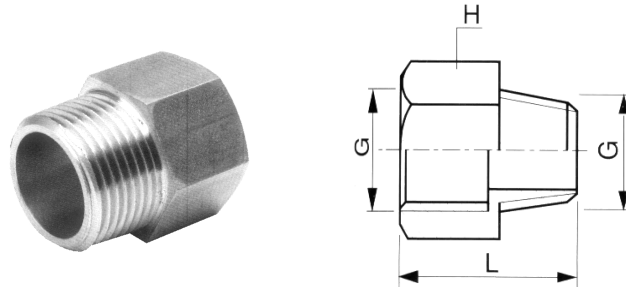
AMSRFM



DN	F	G	L	H	Poids (kg)	Référence GAZ/BSP	Référence NPT/BRIGGS
8/5	1/4"	1/8"	25	17	0.020	AMSRFM85G	AMSRFM85N
12/8	3/8"	1/4"	28	21	0.030	AMSRFM128G	AMSRFM128N
12/5	3/8"	1/8"	27	21	0.040	AMSRFM125G	
15/12	1/2"	3/8"	32	24	0.045	AMS RFM1512G	AMSRFM1512N
15/8	1/2"	1/4"	31	24	0.045	AMSRFM158G	AMSRFM158N
15/5	1/2"	1/8"	30	24	0.045	AMSRFM155G	
20/15	3/4"	1/2"	36	30	0.070	AMSRFM2015G	AMSRFM2015N
20/12	3/4"	3/8"	35	30	0.075	AMSRFM 2012G	
20/8	3/4"	1/4"	35	30	0.075	AMSRFM208G	
25/20	1"	3/4"	43	36	0.105	AMSRFM2520G	AMSRFM2520N
25/15	1"	1/2"	39	36	0.105	AMSRFM2515G	
25/12	1"	3/8"	37	36	0.100	AMSRFM2512G	
32/25	1"1/4	1"	49	46	0.175	AMSRFM3225G	
32/20	1"1/4	3/4"	46	46	0.215	AMSRFM3220G	
40/32	1"1/2	1"1/4	50	55	0.300	AMSRFM4032G	
40/25	1"1/2	1"	49	55	0.335	AMSRFM4025G	
50/40	2"	1"1/2	54	65	0.375	AMSRFM5040G	
50/32	2"	1"1/4	54	65	0.380	AMSRFM5032G	
65/50	2"1/2	2"	59	84		AMSRFM6550G	
65/40	2"1/2	1"1/2	56	84		AMSRFM6540G	
80/65	3"	2"1/2	64	95		AMSRFM8065G	
80/50	3"	2"	63	95		AMSRFM8050G	

Adaptateurs mâle femelle 316L

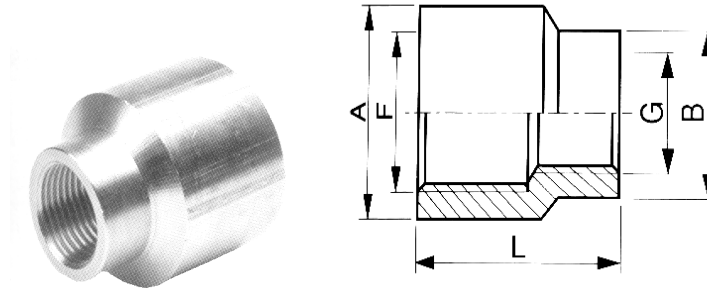
AMSAMF



DN	G	L	H	Poids (kg)	Référence GAZ/BSP
8	1/4"	26	17	0.025	AMSAMF8G
12	3/8"	29	21	0.040	AMSAMF12G
15	1/2"	33	24	0.045	AMSAMF15G
20	3/4"	40	30	0.075	AMSAMF20G
25	1"	46	38	0.120	AMSAMF25G
32	1"1/4"	50	46	0.220	AMSAMF32G
40	1"1/2"	50	55	0.360	AMSAMF40G
50	2"	57	65	0.410	AMSAMF50G

Réductions femelle femelle 316L

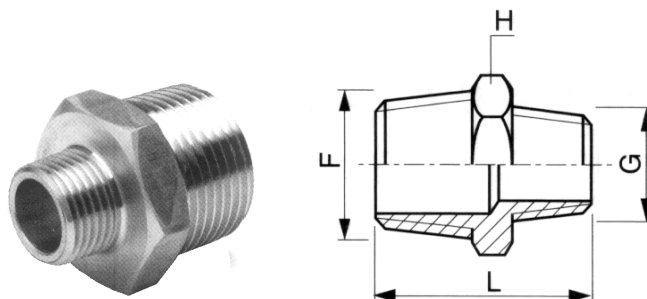
AMSRFF



DN	F	G	L	A	B	Poids (kg)	Référence GAZ/BSP	Référence NPT/BRIGGS
8/5	1/4"	1/8"	27	18	14	0.025	AMSRFF85G	AMSRFF85N
12/8	3/8"	1/4"	30	22	17	0.045	AMSRFF128G	AMSRFF128N
12/5	3/8"	1/8"	30	22	16	0.045	AMSRFF125G	
15/12	1/2"	3/8"	36	25	21	0.070	AMSRFF1512G	AMSRFF1512N
15/8	1/2"	1/4"	36	25	17	0.070	AMSRFF158G	AMSRFF158N
15/5	1/2"	1/8"	36	25	16	0.070	AMSRFF155G	
20/15	3/4"	1/2"	38	32	27	0.110	AMSRFF2015G	AMSRFF2015N
20/12	3/4"	3/8"	38	32	21	0.120	AMSRFF2012G	
20/8	3/4"	1/4"	38	32	17	0.130	AMSRFF208G	
20/5	3/4"	1/8"	38	32	16	0.130	AMSRFF205G	
25/20	1"	3/4"	43	40	33	0.150	AMSRFF2520G	AMSRFF2520N
25/15	1"	1/2"	43	40	27	0.150	AMSRFF2515G	
25/12	1"	3/8"	43	40	21	0.165	AMSRFF2512G	
25/8	1"	1/4"	43	40	16	0.165	AMSRFF258G	
32/25	1"1/4	1"	45	50	42	0.240	AMSRFF3225G	
32/20	1"1/4	3/4"	45	50	33	0.240	AMSRFF3220G	
32/15	1"1/4	1/2"	45	50	27	0.255	AMSRFF3215G	
32/12	1"1/4	3/8"	45	50	21	0.255	AMSRFF3212G	
40/32	1"1/2	1"1/4	50	55	55	0.310	AMSRFF4032G	
40/25	1"1/2	1"	50	55	42	0.310	AMSRFF4025G	
40/20	1"1/2	3/4"	50	55	33	0.340	AMSRFF4020G	
40/15	1"1/2	1/2"	50	55	27	0.350	AMSRFF4015G	
50/40	2"	1"1/2	57	70	60	0.650	AMSRFF5040G	
50/32	2"	1"1/4	57	70	55	0.650	AMSRFF5032G	
50/25	2"	1"	57	70	42	0.670	AMSRFF5025G	
50/20	2"	3/4"	57	70	33	0.670	AMSRFF5020G	
65/50	2"1/2	2"	68	85	75	0.930	AMSRFF6550G	
65/40	2"1/2	1"1/2	68	85	60	0.930	AMSRFF6540G	
80/65	3"	2"1/2	75	100	87	0.150	AMSRFF8065G	
80/50	3"	2"	75	100	75	0.160	AMSRFF8050G	

Réductions mâle mâle 316L

AMSRMM

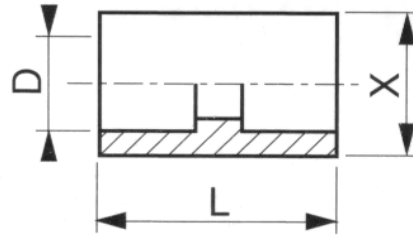
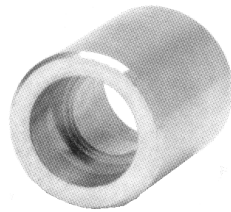


DN	F	G	L	H	Poids (kg)	Référence GAZ/BSP	Référence NPT/BRIGGS
8/5	1/4"	1/8"	27	14	0.010	AMSRMM85G	AMSRMM85N
12/8	3/8"	1/4"	30	19	0.025	AMSRMM128G	AMSRMM128N
12/5	3/8"	1/8"	29	19	0.025	AMSRMM125G	AMSRMM125N
15/12	1/2"	3/8"	33	23	0.040	AMSRMM1512G	AMSRMM1512N
15/8	1/2"	1/4"	32	23	0.040	AMSRMM158G	AMSRMM158N
15/5	1/2"	1/8"	31	23	0.040	AMSRMM155G	
20/15	3/4"	1/2"	39	27	0.070	AMSRMM2015G	AMSRMM 2015N
20/12	3/4"	3/8"	38	27	0.070	AMSRMM2012G	AMSRMM 2012N
20/8	3/4"	1/4"	37	27	0.070	AMSRMM208G	
20/5	3/4"	1/8"	36	27	0.070	AMSRMM205G	
25/20	1"	3/4"	47	36	0.130	AMSRMM2520G	AMSRMM 2520N
25/15	1"	1/2"	43	36	0.130	AMSRMM2515G	
25/12	1"	3/8"	42	36	0.130	AMSRMM2512G	
25/8	1"	1/4"	41	36	0.130	AMSRMM258G	
32/25	1"1/4	1"	52	46	0.280	AMSRMM3225G	
32/20	1"1/4	3/4"	49	46	0.245	AMSRMM3220G	
32/15	1"1/4	1/2"	45	46	0.250	AMSRMM3215G	
32/12	1"1/4	3/8"	44	46	0.250	AMSRMM3212G	
40/32	1"1/2	1"1/4	53	50	0.290	AMSRMM4032G	
40/25	1"1/2	1"	52	50	0.230	AMSRMM4025G	
40/20	1"1/2	3/4"	49	50	0.245	AMSRMM4020G	
40/15	1"1/2	1/2"	45	50	0.250	AMSRMM4015G	
50/40	2"	1"1/2	57	65	0.500	AMSRMM5040G	
50/32	2"	1"1/4	57	65	0.500	AMSRMM5032G	
50/25	2"	1"	56	65	0.510	AMSRMM5025G	
50/20	2"	3/4"	53	65	0.515	AMSRMM5020G	
65/50	2"1/2	2"	61	78	0.910	AMSRMM6550G	
65/40	2"1/2	1"1/2	68	78	0.940	AMSRMM6540G	
80/65	3"	2"1/2	68	92	1.200	AMSRMM8065G	
80/50	3"	2"	67	92	1.300	AMSRMM8050G	

ACCESOIRES DE TUYAUTERIE METRIQUES

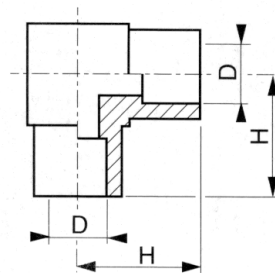
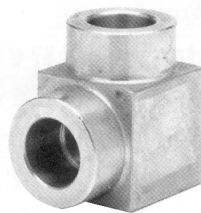
Série légère Socket Welded -316L-

Manchons SW AMSMAW



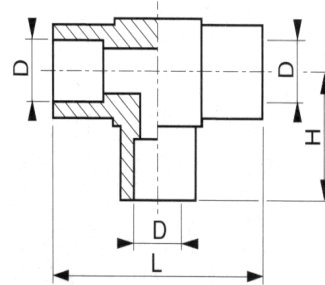
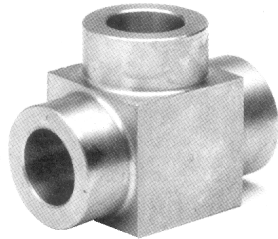
D	L	X	Poids (kg)	Référence
4	15	8	0.005	AMSMAW4
6	15	10	0.006	AMSMAW6
8	15	12	0.008	AMSMAW8
10	18	15	0.015	AMSMAW10
12	20	18	0.025	AMSMAW12

Coudes SW AMSCW



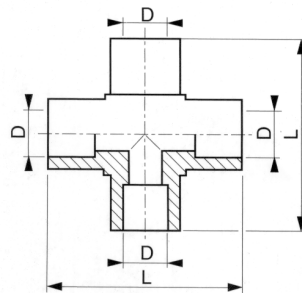
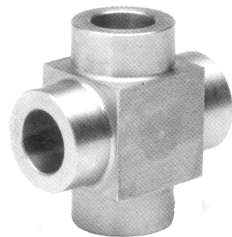
D	H	Poids (kg)	Référence
4	10	0.009	AMSCW4
6	12	0.018	AMSCW6
8	15	0.027	AMSCW8
10	19	0.050	AMSCW10
12	20	0.100	AMSCW12

Tés SW AMSTW



D	L	H	Poids (kg)	Référence
4	20	10	0.011	AMSTW4
6	24	12	0.020	AMSTW6
8	30	15	0.030	AMSTW8
10	38	19	0.055	AMSTW10
12	40	20	0.108	AMSTW12

Croix SW AMSCXW

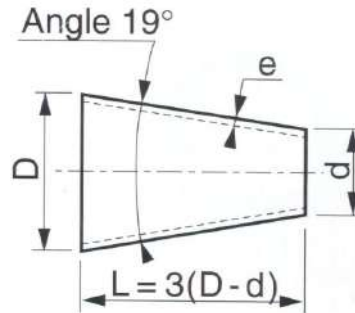


D	L	Poids (kg)	Référence
4	20	0.013	AMSCXW4
6	24	0.022	AMSCXW6
8	30	0.034	AMSCXW8
10	38	0.062	AMSCXW10
12	40	0.118	AMSCXW12

REDUCTIONS ISO

Concentriques RS.

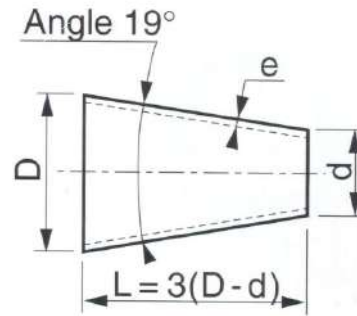
AMS2R / AMS4R



D/d	L	e	Poids (kg)	Référence 304L	Référence 316L
17.2/13.5	11	2	0.010	AMS2R1713	AMS4R1713
21.3/13.5	23	2	0.020	AMS 2R2113	AMS4R2113
21.3/17.2	12	2	0.020	AMS2R2117	AMS4R2117
26.9/13.5	40	2	0.020	AMS2R2613	AMS4R2613
26.9/17.2	29	2	0.020	AMS2R2617	AMS4R2617
26.9/21.3	17	2	0.020	AMS2R2621	AMS4R2621
33.7/13.5	60	2	0.090	AMS2R3313	AMS4R3313
33.7/17.2	49	2	0.070	AMS2R3317	AMS4R3317
33.7/21.3	37	2	0.050	AMS2R3321	AMS4R3321
33.7/26.3	20	2	0.030	AMS2R3326	AMS4R3326
42.4/13.5	87	2	0.150	AMS2R4213	AMS4R4213
42.4/17.2	75	2	0.120	AMS2R4217	AMS4R4217
42.4/21.3	63	2	0.100	AMS2R4221	AMS4R4221
42.4/26.9	46	2	0.080	AMS2R4226	AMS4R4226
42.4/33.7	26	2	0.050	AMS2R4233	AMS4R4233
48.3/17.2	93	2	0.200	AMS2R4817	AMS4R4817
48.3/21.3	81	2	0.150	AMS2R4821	AMS4R4821
48.3/26.9	64	2	0.120	AMS2R4826	AMS4R4826
48.3/33.7	44	2	0.085	AMS2R4833	AMS4R4833
48.3/42.4	18	2	0.040	AMS2R4842	AMS4R4842
60.3/17.2	129	2	0.270	AMS2R6017	AMS4R6017
60.3/21.3	117	2	0.240	AMS2R6021	AMS4R6021
60.3/26.9	100	2	0.220	AMS2R6026	AMS4R6026
60.3/33.7	80	2	0.200	AMS2R6033	AMS4R6033
60.3/42.4	54	2	0.140	AMS2R6042	AMS4R6042
60.3/48.3	36	2	0.100	AMS2R6048	AMS4R6048
76.1/26.9	149	2	0.400	AMS2R7626	AMS4R7626
76.1/33.7	127	2	0.350	AMS2R7633	AMS4R7633
76.1/42.4	101	2	0.300	AMS2R7642	AMS4R7642
76.1/48.3	83	2	0.260	AMS2R7648	AMS4R7648
76.1/60.3	47	2	0.160	AMS2R7660	AMS4R7660
88.9/26.9	185	2	0.575	AMS2R8826	AMS4R8826
88.9/33.7	166	2	0.530	AMS2R8833	AMS4R8833

Concentriques RS.

AMS2R / AMS4R

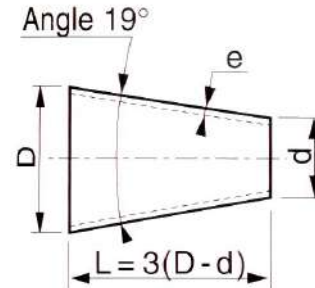


D/d	L	e	Poids (kg)	Référence 304L	Référence 316L
114.3/26.9	262	2	1.110	AMS2R11426	AMS4R11426
114.3/33.7	240	2	1.010	AMS2R11433	AMS4R11433
114.3/42.4	216	2	0.910	AMS2R11442	AMS4R11442
114.3/48.3	198	2	0.840	AMS2R11448	AMS4R11448
114.3/60.3	162	2	0.710	AMS2R11460	AMS4R11460
114.3/76.1	115	2	0.550	AMS2R11476	AMS4R11476
114.3/88.9	76	2	0.390	AMS2R11488	AMS4R11488
139.7/60.3	238	2	1.250	AMS2R13960	AMS4R13960
139.7/76.1	191	2	1.040	AMS2R13976	AMS4R13976
139.7/88.9	152	2	0.820	AMS2R13988	AMS4R13988
139.7/114.3	76	2	0.490	AMS2R139114	AMS4R139114
168.3/60.3	324	2	1.950	AMS2R16860	AMS4R16860
168.3/76.1	276	2	1.750	AMS2R16876	AMS4R16876
168.3/88.9	238	2	1.550	AMS2R16888	AMS4R16888
168.3/114.3	162	2	1.160	AMS2R168114	AMS4R168114
168.3/139.7	86	2	0.670	AMS2R168139	AMS4R168139
219.1/114.3	315	2	2.660	AMS2R219114	AMS4R219114
219.1/139.7	238	2	2.170	AMS2R219139	AMS4R219139
219.1/168.3	152	2	1.500	AMS2R219168	AMS4R219168
273/168.3	314	2	3.510	AMS2R273168	AMS4R273168
273/219.1	161	2	3.020	AMS2R273219	AMS4R273219
323.9/219.1	312	2	4.320	AMS2R323219	AMS4R323219
323.9/273	152	2	2.310	AMS2R323273	AMS4R323273

REDUCTIONS METRIQUES

Concentriques RS.

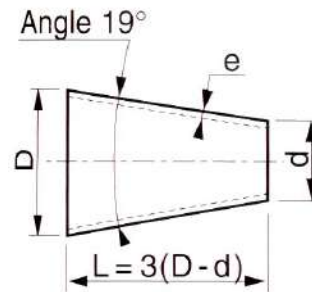
AMS2R / AMS4R



D/d	L/e	Poids (kg)	Référence 304L	Référence 316L
29/19	30/2	0.030		
29/24	15/2	0.030		
36/24	36/2	0.050		
36/29	21/2	0.045		
44/24	60/2	0.100		AMS4R4424
44/34	30/2	0.060		AMS4R4434
54/24	90/2	0.180	AMS2R5424	AMS4R5424
54/34	60/2	0.130	AMS2R5434	AMS4R5434
54/44	30/2	0.80	AMS2R5444	AMS4R5444
64/44	60/2	0.150	AMS2R6444	AMS4R6444
64/54	30/2	0.90	AMS2R6454	AMS4R6454
69/44	75/2	0.210	AMS2R6944	AMS4R6944
69/54	45/2	0.130	AMS2R6954	AMS4R6954
74/44	90/2	0.260	AMS2R7444	AMS4R7444
74/54	60/2	0.180	AMS2R7454	AMS4R7454
74/64	30/2	0.100	AMS2R7464	AMS4R7464
84/44	120/2	0.410	AMS2R8444	AMS4R8444
84/54	90/2	0.320	AMS2R8454	AMS4R8454
84/64	60/2	0.220	AMS2R8464	AMS4R8464
84/69	45/2	0.160	AMS2R8469	AMS4R8469
84/74	30/2	0.110	AMS2R8474	AMS4R8474
104/54	150/2	0.600	AMS2R10454	AMS4R10454
104/69	105/2	0.460	AMS2R10469	AMS4R10469
104/74	90/2	0.400	AMS2R10474	AMS4R10474
104/84	60/2	0.260	AMS2R10484	AMS4R10484
129/74	165/2	1.050	AMS2R12974	AMS4R12974
129/84	135/2	0.750	AMS2R12984	AMS4R12984
129/104	75/2	0.400	AMS2R129104	AMS4R129104
154/84	210/2	1.300	AMS2R15484	AMS4R15484
154/104	150/2	1.050	AMS2R154104	AMS4R154104
154/129	75/2	0.490	AMS2R154129	AMS4R154129
204/104	300/2	2.550	AMS2R204104	AMS4R204104

Concentriques RS.

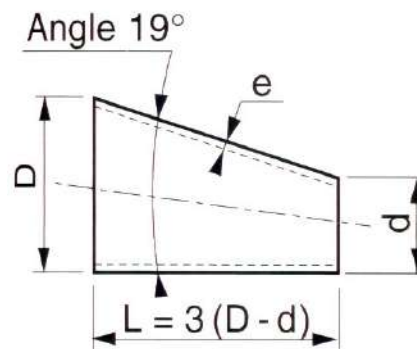
AMS2R/ AMS4R



D/d	L/e	Poids (kg)	Référence 304L	Référence 316L
204/129	225/2	1.850	AMS2R204129	AMS4R204129
204/154	150/2	1.300	AMS2R204154	AMS4R204154
254/129	375/2	3.850	AMS2R254129	AMS4R254129
254/154	300/2	3.520	AMS2R254154	AMS4R254154
254/104	450/2	3.950	AMS2R254104	AMS4R254104
304/154	450/2	5.850	AMS2R304154	AMS4R304154
304/204	300/2	4.350	AMS2R304204	AMS4R304204
304/254	150/2	2.500	AMS2R304254	AMS4R304254
354/204	450/2	6.800	AMS2R354204	AMS4R354204
354/254	300/2	4.900	AMS2R354254	AMS4R354254
354/304	150/2	2.500	AMS2R354304	AMS4R354304

Excentriques RS.

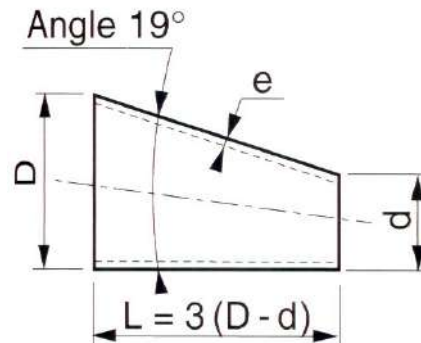
AMS2EXC / AMS4EXC



D/d	L/e	Poids (kg)	Référence 304L	Référence 316L
29/19	30/2	0.030		
29/24	15/2	0.030		
36/24	36/2	0.050		
36/29	21/2	0.045		
44/24	60/2	0.100		
44/34	30/2	0.060		
54/24	90/2	0.180	AMS2EXC5424	AMS4EXC5424
54/34	60/2	0.130	AMS2EXC5434	AMS4EXC5434
54/44	30/2	0.80	AMS2EXC5444	AMS4EXC5444

Excentriques RS.

AMS2EXC / AMS4EXC

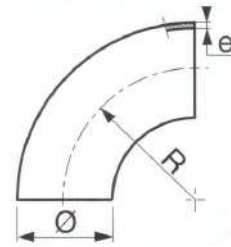


D/d	L/e	Poids (kg)	Référence 304L	Référence 316L
64/44	60/2	0.150	AMS2EXC6444	AMS4EXC6444
64/54	30/2	0.90	AMS2EXC6454	AMS4EXC6454
69/44	75/2	0.210	AMS2EXC6944	AMS4EXC6944
69/54	45/2	0.130	AMS2EXC6954	AMS4EXC6954
74/44	90/2	0.260	AMS2EXC7444	AMS4EXC7444
74/54	60/2	0.180	AMS2EXC7454	AMS4EXC7454
74/64	30/2	0.100	AMS2EXC7464	AMS4EXC7464
84/44	120/2	0.410	AMS2EXC8444	AMS4EXC8444
84/54	90/2	0.320	AMS2EXC8454	AMS4EXC8454
84/64	60/2	0.220	AMS2EXC8464	AMS4EXC8464
84/69	45/2	0.160	AMS2EXC8469	AMS4EXC8469
84/74	30/2	0.110	AMS2EXC8474	AMS4EXC8474
104/54	150/2	0.600	AMS2EXC10454	AMS4EXC10454
104/69	105/2	0.460	AMS2EXC10469	AMS4EXC10469
104/74	90/2	0.400	AMS2EXC10474	AMS4EXC10474
104/84	60/2	0.260	AMS2EXC10484	AMS4EXC10484
129/74	165/2	1.050	AMS2EXC12974	AMS4EXC12974
129/84	135/2	0.750	AMS2EXC12984	AMS4EXC12984
129/104	75/2	0.400	AMS2EXC129104	AMS4EXC129104
154/84	210/2	1.300	AMS2EXC15484	AMS4EXC15484
154/104	150/2	1.050	AMS2EXC154104	AMS4EXC154104
154/129	75/2	0.490	AMS2EXC154129	AMS4EXC154129
204/104	300/2	2.550	AMS2EXC204104	AMS4EXC204104
204/129	225/2	1.850	AMS2EXC204129	AMS4EXC204129
204/154	150/2	1.300	AMS2EXC204154	AMS4EXC204154
254/129	375/2	3.850	AMS2EXC254129	AMS4EXC254129
254/154	300/2	3.520	AMS2EXC254154	AMS4EXC254154
254/104	450/2	3.950	AMS2EXC254104	AMS4EXC254104
304/154	450/2	5.850	AMS2EXC304154	AMS4EXC304154
304/204	300/2	4.350	AMS2EXC304204	AMS4EXC304204
304/254	150/2	2.500	AMS2EXC304254	AMS4EXC304254
354/204	450/2	6.800	AMS2EXC354204	AMS4EXC354204
354/254	300/2	4.900	AMS2EXC354254	AMS4EXC354254
354/304	150/2	2.500	AMS2EXC354304	AMS4EXC354304

COUDES ISO

Coudes iso roulés soudés 3D

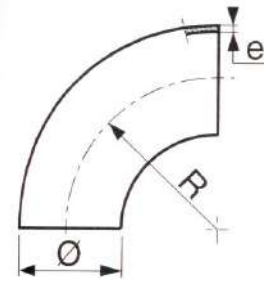
AMS 23DR / AMS 43DR



Ø	R	E	Poids (kg)	Référence 304L	Référence 316L
13.5	20	1.6	0.025	AMS23DR131	AMS43DR131
13.5	20	2.3	0.035	AMS23DR13G	AMS43DR13G
17.2	25	1.6	0.030	AMS23DR171	AMS43DR171
17.2	25	2.3	0.045	AMS23DR17G	AMS43DR17G
21.3	27	1.6	0.040	AMS23DR211	AMS43DR211
21.3	27	2	0.050	AMS23DR212	AMS43DR212
21.3	27	2.6	0.065	AMS23DR21G	AMS43DR21G
21.3	38	1.6	0.040	AMS23DR21138	AMS43DR21138
21.3	38	2	0.050	AMS23DR21238	AMS43DR21238
21.3	38	2.6	0.065	AMS23DR21G38	AMS43DRG38
26.9	28	1.6	0.048	AMS23DR261	AMS43DR261
26.9	28	2	0.060	AMS23DR262	AMS43DR262
26.9	28	2.6	0.080	AMS23DR26G	AMS43DR26G
33.7	38	1.6	0.080	AMS23DR331	AMS43DR331
33.7	38	2	0.100	AMS23DR332	AMS43DR332
33.7	38	3.2	0.220	AMS23DR33G	AMS43DR33G
42.4	47	1.6	0.120	AMS23DR421	AMS43DR421
42.4	47	2	0.150	AMS23DR422	AMS43DR422
42.4	47	3.2	0.250	AMS23DR42G	AMS43DR42G
48.3	57	1.6	0.170	AMS23DR481	AMS43DR481
48.3	57	2	0.210	AMS23DR482	AMS43DR482
48.3	57	3.2	0.360	AMS23DR48G	AMS43DR48G
60.3	76	1.6	0.280	AMS23DR601	AMS43DR601
60.3	76	2	0.350	AMS23DR602	AMS43DR602
60.3	76	3.6	0.560	AMS23DR60G	AMS43DR60G
76.1	95	2	0.560	AMS23DR762	AMS43DR762
76.1	95	3.6	1.200	AMS23DR76G	AMS43DR76G
88.9	114	2	0.780	AMS23DR882	AMS43DR882
88.9	114	4	1.800	AMS23DR88G	AMS43DR88G
114.3	152	2	1.350	AMS23DR1142	AMS43DR1142
139.7	190	2	1.560	AMS23DR1392	AMS43DR1392
168.3	228	2	2.990	AMS23DR1682	AMS43DR1682
219.1	305	2	5.500	AMS23DR2192	AMS43DR2192
273	381	2	8.500	AMS23DR2732	AMS43DR2732
323.9	457	2	11.70	AMS23DR3232	AMS43DR3232
355.6	533	3	22.00	AMS23DR3552	AMS43DR3552
406.4	610	3	29.00	AMS23DR4062	AMS43DR4062
457	686	3	36.75	AMS23DR4572	AMS43DR4572
508	762	3	45.39	AMS23DR5082	AMS43DR5082
609.6	914	3	64.90	AMS23DR6092	AMS43DR6092

Coudes iso étirés sans soudure 3D

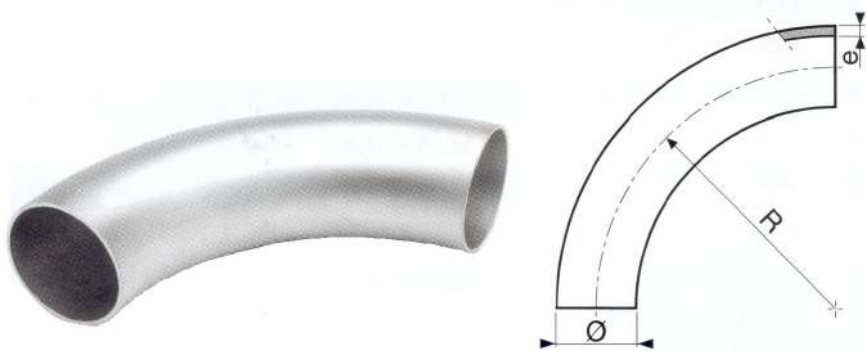
AMS23DE / AMS43DE



Ø	R	E	Poids (kg)	Référence 304L	Référence 316L
13.5	20	1.6	0.025	AMS23DE131	AMS43DE131
13.5	20	2.3	0.035	AMS23DE13G	AMS43DE13G
17.2	25	1.6	0.030	AMS23DE171	AMS43DE171
17.2	25	2.3	0.045	AMS23DE17G	AMS43DE17G
21.3	27	1.6	0.040	AMS23DE211	AMS43DE211
21.3	27	2	0.050	AMS23DE212	AMS43DE212
21.3	27	2.6	0.065	AMS23DE21G	AMS43DE21G
21.3	38	1.6	0.040	AMS23DE21138	AMS43DE21138
21.3	38	2	0.050	AMS23DE21238	AMS43DE21238
21.3	38	2.6	0.065	AMS23DE2138	AMS43DE21G38
26.9	28	1.6	0.048	AMS23DE261	AMS43DE261
26.9	28	2	0.060	AMS23DE262	AMS43DE262
26.9	28	2.6	0.080	AMS23DE26G	AMS43DE26G
33.7	38	1.6	0.080	AMS23DE331	AMS43DE331
33.7	38	2	0.100	AMS23DE332	AMS43DE332
33.7	38	3.2	0.220	AMS23DE33G	AMS43DE33G
42.4	47	1.6	0.120	AMS23DE421	AMS43DE421
42.4	47	2	0.150	AMS23DE422	AMS43DE422
42.4	47	3.2	0.250	AMS23DE42G	AMS43DE42G
48.3	57	1.6	0.170	AMS23DE481	AMS43DE481
48.3	57	2	0.210	AMS23DE482	AMS43DE482
48.3	57	3.2	0.360	AMS23DE48G	AMS43DE48G
60.3	76	2	0.350	AMS23DE602	AMS43DE602
60.3	76	3.6	0.560	AMS23DE60G	AMS43DE60G
76.1	95	2	0.560	AMS23DE762	AMS43DE762
76.1	95	3.6	1.200	AMS23DE76G	AMS43DE76G
88.9	114	2	1.800	AMS23DE882	AMS43DE882
88.9	114	4	36.75	AMS23DE88G	AMS43DE88G
114.3	152	2	1.350	AMS23DE1142	AMS43DE1142
114.3	152	4.5	3.200	AMS23DE114G	AMS43DE114G

Coudes iso roulés soudés 5D

AMS25DR/ AMS45DR



Ø	R	E	Poids (kg)	Référence 304L	Référence 316L
13.5	30	1.6			
13.5	30	2.3			
17.2	30	1.6	0.030	AMS25DR171	AMS45DR171
17.2	30	2.3	0.050		
21.3	45	1.6	0.060	AMS25DR211	AMS45DR211
21.3	45	2	0.080	AMS25DR212	AMS45DR212
21.3	45	2.6	0.100	AMS25DR21G	AMS45DR21G
26.9	57	1.6	0.080	AMS25DR261	AMS45DR261
26.9	57	2	0.110	AMS25DR262	AMS45DR262
26.9	57	2.6	0.160	AMS25DR26G	AMS45DR26G
33.7	72	1.6	0.140	AMS25DR331	AMS45DR331
33.7	72	2	0.180	AMS25DR332	AMS45DR332
33.7	72	3.2	0.290	AMS25DR33G	AMS45DR33G
42.4	92	1.6	0.230	AMS25DR421	AMS45DR421
42.4	92	2	0.280	AMS25DR422	AMS45DR422
42.4	92	3.2	0.450	AMS25DR42G	AMS45DR42G
48.3	109	1.6	0.330	AMS25DR481	AMS45DR481
48.3	109	2	0.480	AMS25DR482	AMS45DR482
48.3	109	3.2	0.770	AMS25DR48G	AMS45DR48G
60.3	137	2	0.630	AMS25DR602	AMS45DR602
60.3	137	3.6	1.150	AMS25DR60G	AMS45DR60G
76.1	175	2	0.870	AMS25DR762	AMS45DR762
76.1	175	3.6	1.560	AMS25DR76G	AMS45DR76G
88.9	207	2	1.420	AMS25DR882	AMS45DR882
88.9	207	4	2.840	AMS25DR88G	AMS45DR88G
114.3	270	2	2.390	AMS25DR1142	AMS45DR1142
114.3	270	4.5	5.370	AMS25DR114G	AMS45DR114G

Coudes iso étirés sans soudure 5D

AMS25DE / AMS45DE



Ø	R	E	Poids (kg)	Référence 304L	Référence 316L
13.5	30	1.6			
13.5	30	2.3		AMS25DE13G	AMS45DE13G
17.2	30	1.6	0.030	AMS25DE171	AMS45DE171
17.2	30	2.3	0.050	AMS25DE17G	AMS45DE17G
21.3	45	1.6	0.060	AMS25DE211	AMS45DE211
21.3	45	2	0.080	AMS25DE212	AMS45DE212
21.3	45	2.6	0.100	AMS25DE21G	AMS45DE21G
26.9	57	1.6	0.080	AMS25DE261	AMS45DE261
26.9	57	2	0.110	AMS25DE262	AMS45DE262
26.9	57	2.6	0.160	AMS25DE26G	AMS45DE26G
33.7	72	1.6	0.140	AMS25DE331	AMS45DE331
33.7	72	2	0.180	AMS25DE332	AMS45DE332
33.7	72	3.2	0.290	AMS25DE33G	AMS45DE33G
42.4	92	1.6	0.230	AMS25DE421	AMS45DE421
42.4	92	2	0.280	AMS25DE422	AMS45DE422
42.4	92	3.2	0.450	AMS25DE42G	AMS45DE42G
48.3	109	1.6	0.330	AMS25DE481	AMS45DE481
48.3	109	2	0.480	AMS25DE482	AMS45DE482
48.3	109	3.2	0.770	AMS25DE48G	AMS45DE48G
60.3	137	2	0.630	AMS25DE602	AMS45DE602
60.3	137	3.6	1.150	AMS25DE60G	AMS45DE60G
76.1	175	2	0.870	AMS25DE762	AMS45DE762
76.1	175	3.6	1.560	AMS25DE76G	AMS45DE76G
88.9	207	2	1.420	AMS25DE882	AMS45DE882
88.9	207	4	2.840	AMS25DE88G	AMS45DE88G
114.3	270	2	2.390	AMS25DE1142	AMS45DE1142
114.3	270	4.5	5.370	AMS25DE114G	AMS45DE114G

COUDES METRIQUES

Coudes métriques roulés soudés 1.5D

AMS21DR / AMS41DR

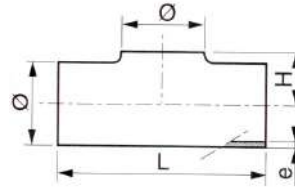


Ø	R	E	Poids (kg)	Référence 304L	Référence 316L
18	23	1.5	0.030	AMS21DR181	AMS41DR181
20	26	1.5	0.030	AMS21DR201	AMS41DR201
23	30	1.5	0.040	AMS21DR231	AMS41DR231
25	37	1.5	0.060	AMS21DR251	AMS41DR251
28	37	1.5	0.065	AMS21DR281	AMS41DR281
30	38	1.5	0.070	AMS21DR301	AMS41DR301
33	45	1.5	0.090	AMS21DR331	AMS41DR331
38	52	1.5	0.130	AMS21DR381	AMS41DR381
43	60	1.5	0.160	AMS21DR431	AMS41DR431
53	75	1.5	0.250	AMS21DR531	AMS41DR531
54	75	2	0.320	AMS21DR542	AMS41DR542
63.5	90	1.6	0.360	AMS21DR631	AMS41DR631
64	90	2	0.450	AMS21DR642	AMS41DR642
70	95	2	0.510	AMS21DR702	AMS41DR702
73	95	1.5	0.420	AMS21DR731	AMS41DR731
84	120	2	0.750	AMS21DR842	AMS41DR842
104	150	2	1.300	AMS21DR1042	AMS41DR1042
129	188	2	1.800	AMS21DR4292	AMS41DR4292
154	225	2	2.610	AMS21DR1542	AMS41DR1542
204	300	2	4.550	AMS21DR2042	AMS41DR2042
254	375	2	7.600	AMS21DR2542	AMS41DR2542

TES ISO

Tés égaux iso sans manchette

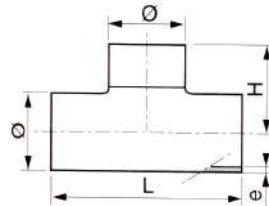
AMS2TSS / AMS4TSS



Ø	e	L	H	Poids (kg)	Référence 304L	Référence 316L
13.5	1.6	51	10	0.03	AMS2TSS131	AMS4TSS131
17.2	1.6	51	10	0.03	AMS2TSS171	AMS4TSS171
21.3	1.6	51	12	0.04	AMS2TSS211	AMS4TSS211
26.9	1.6	57	15	0.06	AMS2TSS261	AMS4TSS261
33.7	2	76	19	0.11	AMS2TSS332	AMS4TSS332
42.4	2	95	23	0.19	AMS2TSS422	AMS4TSS422
48.3	2	114	26	0.26	AMS2TSS482	AMS4TSS482
60.3	2	127	33	0.37	AMS2TSS602	AMS4TSS602
76.1	2	152	41	0.56	AMS2TSS762	AMS4TSS762
88.9	2	171	47	0.77	AMS2TSS882	AMS4TSS882
114.3	2	210	61	1.22	AMS2TSS1142	AMS4TSS1142
114.3	3	210	61	1.76	AMS2TSS1143	AMS4TSS1143
139.7	2	248	74	1.75	AMS2TSS1392	AMS4TSS1392
139.7	3	248	74	2.50	AMS2TSS1393	AMS4TSS1393
168.3	2	286	89	2.36	AMS2TSS1682	AMS4TSS1682
168.3	3	286	89	3.50	AMS2TSS1683	AMS4TSS1683

Tés égaux iso avec manchette

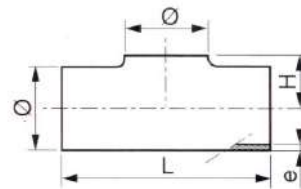
AMS2TS / AMS4TS



Ø	e	L	H	Poids (kg)	Référence 304L	Référence 316L
17.2	1.6	51	25.5	0.04	AMS2TS171	AMS4TS171
21.3	1.6	51	25.5	0.05	AMS2TS211	AMS4TS211
26.9	1.6	57	28.5	0.07	AMS2TS261	AMS4TS261
33.7	2	76	38	0.16	AMS2TS332	AMS4TS332
42.4	2	95	47.5	0.25	AMS2TS422	AMS4TS122
48.3	2	114	57	0.34	AMS2TS482	AMS4TS182
60.3	2	127	63.5	0.48	AMS2TS602	AMS4TS602
76.1	2	152	76	0.71	AMS2TS762	AMS4TS762
88.9	2	171	85.5	0.93	AMS2TS882	AMS4TS882
114.3	2	210	105	1.48	AMS2TS1142	AMS4TS1142
114.3	3	210	105	2.32	AMS2TS1143	AMS4TS1143
139.7	2	248	124	2.10	AMS2TS1392	AMS4TS1392
139.7	3	248	124	3.32	AMS2TS1393	AMS4TS1393
168.3	2	286	143	2.90	AMS2TS1682	AMS4TS1682
168.3	3	286	143	4.62	AMS2TS1683	AMS4TS1683

TES METRIQUES

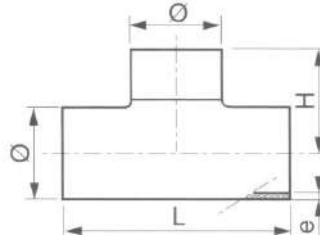
Tés égaux métriques sans manchette roulés soudés AMS2TSS / AMS4TSS



Ø	e	L	H	Poids (kg)	Référence 304L	Référence 316L
23	1.5	51	13	0.040	AMS2TSS231	AMS4TSS231
25	2	57	14	0.045		AMS4TSS252
28	1.5	57	17	0.050	AMS2TSS281	AMS4TSS281
30	2	76	19	0.100		AMS4TSS302
33	1.5	76	19	0.110	AMS2TSS331	AMS4TSS331
38	1.5	95	22	0.130	AMS2TSS381	AMS4TSS381
43	1.5	95	24	0.140	AMS2TSS431	AMS4TSS431
44	2	95	24	0.210		AMS4TSS442
54	2	114	29	0.300	AMS2TSS542	AMS4TSS542
64	2	127	34	0.380	AMS2TSS642	AMS4TSS642
84	2	171	45	0.630	AMS2TSS842	AMS4TSS842
104	2	210	55	0.960	AMS2TSS1042	AMS4TSS1042
123	1.5	248	65	1.800	AMS2TSS1231	AMS4TSS1231
129	2	248	68	1.900	AMS2TSS1292	AMS4TSS1292
154	2	248	80	2.100	AMS2TSS1542	AMS4TSS1542
204	2	248	110	4.200	AMS2TSS2042	AMS4TSS2042

Tés égaux métriques avec manchette roulés soudés

AMS2TS / AMS4TS

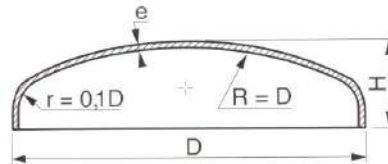


Ø	e	L	H	Poids (kg)	Référence 304L	Référence 316L
23	1.5	51	26	0.040	AMS2TS231	AMS4TS231
25	2	57		0.050		
28	1.5	57	29	0.060	AMS2TS281	AMS4TS281
30	2	76		0.100		
33	1.5	76	38	0.110	AMS2TS331	AMS4TS331
38	1.5	95	38	0.180	AMS2TS381	AMS4TS381
43	1.5	95	48	0.190	AMS2TS431	AMS4TS431
44	2	95		0.200		
54	2	114	57	0.340	AMS2TS542	AMS4TS542
64	2	127	64	0.410	AMS2TS642	AMS4TS642
84	2	171	86	0.750	AMS2TS842	AMS4TS842
104	2	210	105	1.200	AMS2TS1042	AMS4TS1042
123	1.5	248	124	1.600	AMS2TS1231	AMS4TS1231
129	2	248	124	1.700	AMS2TS1292	AMS4TS1292
154	2	248	143	2.400	AMS2TS1542	AMS4TS1542
204	2	248		3.50	AMS2TS2042	AMS4TS2042

FONDS BOMBES

Fonds bombés ISO (Epaisseur 2 mm)

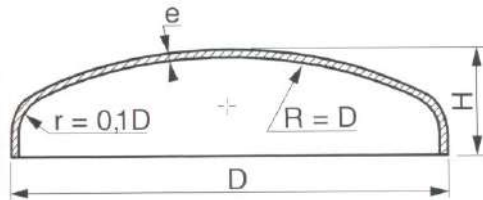
AMS2FB / AMS4FB



DN	D	H	R	Poids (kg)	Référence 304L	Référence 316L
10	17.2	10	17		AMS2FB17	AMS4FB17
15	21.3	10	21	0.04	AMS2FB21	AMS4FB21
20	26.9	10	27	0.019	AMS2FB26	AMS4FB26
25	33.7	11	34	0.027	AMS2FB33	AMS4FB33
32	42.4	11	42	0.039	AMS2FB42	AMS4FB42
40	48.3	11.5	48	0.052	AMS2FB48	AMS4FB48
50	60.3	16.5	60	0.069	AMS2FB60	AMS4FB60
65	76.1	18.5	76	0.178	AMS2FB76	AMS4FB76
80	88.9	18.5	88	0.244	AMS2FB88	AMS4FB88
100	114.3	26	114	0.388	AMS2FB114	AMS4FB114
125	139.7	35.5	140	0.565	AMS2FB139	AMS4FB139
150	168.3	44.5	168	0.818	AMS2FB168	AMS4FB168
200	219.1	68.5	219	2.350	AMS2FB219	AMS4FB219
250	273	90	273	2.989	AMS2FB273	AMS4FB273
300	323.9	99	324	3.712	AMS2FB323	AMS4FB232
350	355.6	106	355		AMS2FB355	AMS4FB355
400	406.4	125EP3	406		AMS2FB406	AMS4FB406
450	457	130EP3	457		AMS2FB457	AMS4FB457
500	508	135	508		AMS2FB508	AMS4FB508

Fonds bombés métriques (Epaisseur 2 mm)

AMS2FB / AMS4FB

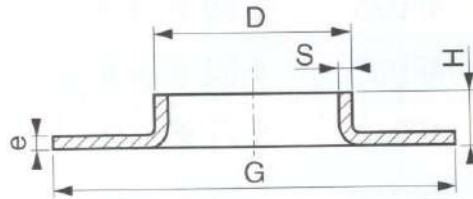


D	H	R	Poids (kg)	Référence 304L	Référence 316L
24	10	24	0.017		
28	10	28	0.022	AMS2FB28	AMS4FB28
34	11	34	0.030	AMS2FB34	AMS4FB34
38	11	38	0.035	AMS2FB38	AMS4FB38
44	11	44	0.040	AMS2FB44	AMS4FB44
51	12	51	0.060	AMS2FB51	AMS4FB51
54	12.5	54	0.063	AMS2FB54	AMS4FB54
64	16.5	64	0.075	AMS2FB64	AMS4FB64
69	17.5	69	0.080	AMS2FB69	AMS4FB69
74	18.5	76	0.175	AMS2FB74	AMS4FB74
84	23	89	0.182	AMS2FB84	AMS4FB84
104	26	104	0.260	AMS2FB104	AMS4FB104
129	25.5	129	0.390	AMS2FB129	AMS4FB129
154	43	154	0.575	AMS2FB154	AMS4FB154
204	68.5	200	1.00	AMS2FB204	AMS4FB204
254	75	254	1.430	AMS2FB254	AMS4FB254
304		304	3.50	AMS2FB304	AMS4FB304
354		354		AMS2FB354	AMS4FB354

COLLET

Collets emboutis ISO (Epaisseur 2 mm)

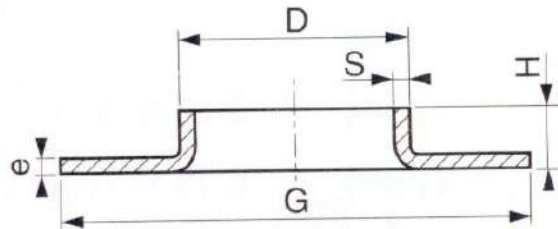
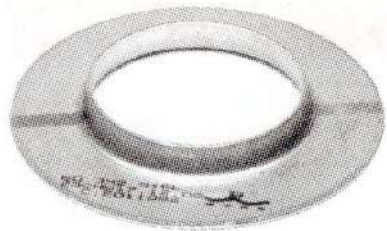
AMS2CM / AMS4CM



DN	Pouces	D	S	e	G	H	Poids (kg)	Référence 304L	Référence 316L
10	3/8"	17.2	1.6	2	40	6	0.01	AMS2CM17	AMS4CM17
15	1/2"	21.3	1.6	2	45	6	0.01	AMS2CM21	AMS4CM21
20	3/4"	26.9	1.6	2	58	7	0.04	AMS2CM26	AMS4CM26
25	1"	33.7	1.6	2	68	9	0.05	AMS2CM33	AMS4CM33
32	1"1/4	42.4	1.6	2	78	10	0.07	AMS2CM42	AMS4CM42
40	1"1/2	48.3	1.6	2	88	10	0.08	AMS2CM48	AMS4CM48
50	2"	60.3	1.6	2	102	12	0.11	AMS2CM60	AMS4CM60
65	2"1/2	76.1	1.6	2	122	12	0.15	AMS2CM76	AMS4CM76
80	3"	88.9	2	2	138	13	0.19	AMS2CM88	AMS4CM88
100	4"	114.3	2	2	158	13	0.21	AMS2CM114	AMS4CM114
125	5"	139.7	2	2	188	14	0.26	AMS2CM139	AMS4CM139
150	6"	168.3	2	2	212	18	0.34	AMS2CM168	AMS4CM168
200	8"	219.1	2	2	268	22	0.53	AMS2CM219	AMS4CM219
250	10"	273	2	2	320	18	0.57	AMS2CM273	AMS4CM273
300	12"	323.9	2	2	370	22	0.65	AMS2CM323	AMS4CM323
350	14"	355.6	3	3	430	24	0.790	AMS2CM355	AMS4CM355
400	16"	406.4	3	3	482	24	1.800	AMS2CM406	AMS4CM406

Collets emboutis Métrique (Epaisseur 2 mm)

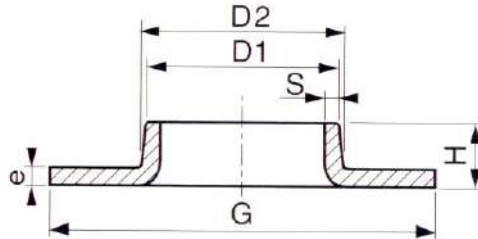
AMS2CMM / AMS4CMM



D	S	e	G	H	Poids (kg)	Référence 304L	Référence 316L
18	1.5	2	50	6	0.01	AMS2CMM18	AMS4CMM18
24	2	2	60	7	0.02	AMS2CMM24	AMS4CMM24
28	2	2	70	8	0.04	AMS2CMM28	AMS4CMM28
38	2	2	80	9	0.055	AMS2CMM38	AMS4CMM38
44	2	2	90	10	0.70	AMS2CMM44	AMS4CMM44
54	2	2	105	12	0.80	AMS2CMM54	AMS4CMM54
64	2	2	115	12	0.11	AMS2CMM64	AMS4CMM64
69	2	2	125	12	0.15	AMS2CMM69	AMS4CMM69
74	2	2	125	12	0.17	AMS2CMM74	AMS4CMM74
84	2	2	140	13	0.19	AMS2CMM84	AMS4CMM84
104	2	2	160	14	0.21	AMS2CMM104	AMS4CMM104
129	2	2	184	14	0.24	AMS2CMM129	AMS4CMM129
154	2	2	215	18	0.32	AMS2CMM154	AMS4CMM154
204	2	2	270	19	0.50	AMS2CMM204	AMS4CMM204
254	2	2	325	22	0.55	AMS2CMM254	AMS4CMM254
304	2	2	375	23	0.60	AMS2CMM304	AMS4CMM304
354	2	2	435	23	0.70	AMS2CMM354	AMS4CMM354
404	2	2	485	23	0.90	AMS2CMM404	AMS4CMM404

Collets épais usinés

AMS2CE / AMS4CE

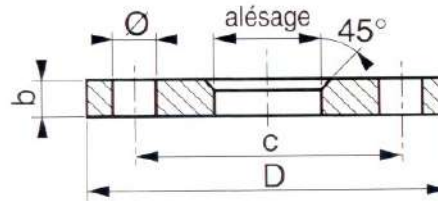


DN	Pouces	D1	D2	S		e	G	H	Poids (kg)	Référence 304L	Référence 316L
				de	à						
10	3/8"	17.2	18.4	1.6	2	3	42	7	0.03		
15	1/2"	21.3	22.5	1.6	2	3	47	7	0.04	AMS2CE21	AMS4CE21
20	3/4"	26.9	27.2	1.6	2	3	58	9	0.06	AMS2CE26	AMS4CE26
25	1"	33.7	37	1.6	3	4	68	10.5	0.10	AMS2CE33	AMS4CE33
32	1 1/4"	42.4	46	1.6	3.2	4	78	14	0.14	AMS2CE42	AMS4CE42
40	1 1/2"	48.3	51	1.6	3.2	4	88	14	0.22	AMS2CE48	AMS4CE48
50	2"	60.3	63.5	1.6	3.6	4	102	16	0.25	AMS2CE60	AMS4CE60
65	2 1/2"	76.1	79.5	1.6	3.6	5	122	19	0.37	AMS2CE76	AMS4CE76
80	3"	88.9	93.5	2	4	5	133	23	0.49	AMS2CE88	AMS4CE88
100	4"	114.3	117.5	2	4	5	158	26	0.65	AMS2CE114	AMS4CE114
125	5"	139.7	143	2	4.5	5	184	26	0.80	AMS2CE139	AMS4CE139
150	6"	168.3	172	2	4.5	5	212	29	0.98	AMS2CE168	AMS4CE168
200	8"	219.1	224	2	4.5	5	268	32	1.38	AMS2CE219	AMS4CE219
250	10"	273	277	3	4.5	5	320	32	1.60	AMS2CE273	AMS4CE273
300	12"	323.9	328	3	5	5	370	36	2.00	AMS2CE323	AMS4CE323
350	14"	355.6	359.5	3	5	5	430	40	3.20	AMS2CE355	AMS4CE355
400	16"	406.4	410	3	5	6	482	48	4.50	AMS2CE406	AMS4CE406
450	18"	457	461	3	6	8	532	48	5.200	AMS2CE457	AMS4CE457

BRIDES TOURNANTES

Brides tournantes PN 10 alu AS 13

AMSABT

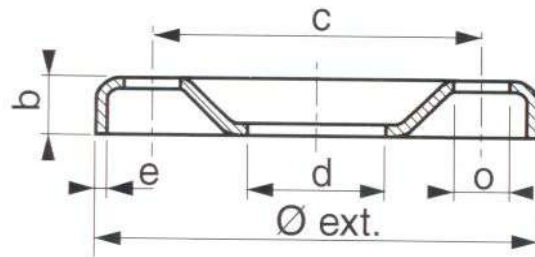


DN	Dimensions (en mm)				Perçage (en mm)			Poids (kg)	Référence
	D	Alésage		b	n	Ø	c		
		A Met	C ISO						
10	90	16	19	12	4	14	60	0.185	AMSABT10
15	95	23	24	12	4	14	65	0.190	AMSABT15
20	105	28	30	12	4	14	75	0.250	AMSABT20
25	115	34	36	12	4	14	85	0.380	AMSABT25
32	140	40	46	16	4	18	100	0.560	AMSABT32
40	150	48	54	16	4	18	110	0.620	AMSABT40
50	165	58	65	16	4	18	125	0.750	AMSABT50
65	185	73	81	16	4	18	145	0.900	AMSABT65
80	200	90	94	18	8	18	160	1.100	AMSABT80
100	220	110	119	18	8	18	180	1.230	AMSAB100
125	250	135	144	18	8	18	210	1.530	AMSABT125
150	285	160	173	18	8	22	240	1.880	AMSABT150
200	340	212	225	20	8	22	295	2.700	AMSABT200
250	395	262	279	22	12	22	350	3.650	AMSABT250
300	445	312	329	22	12	22	400	4.270	AMSABT300
350	505		362	22	16	22	460	5.200	AMSABT350
400	565		413	25	16	25	515	7.170	AMSABT400
450	615		466	25	20	25	565	7.700	AMSABT450
500	670		517	28	20	25	620	9.650	AMSABT500
600	780		618	30	20	30	725	13.00	AMSABT600
700	895		721	32	24	30	840	17.200	AMSABT700

Brides tournantes embouties PN 10 DIN 2642

Inox 304

AMS2BE

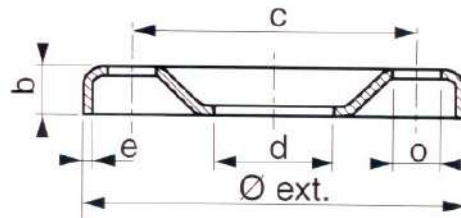


DN	Dimensions (en mm)				Perçage (en mm)			Poids (kg)	Référence Inox 304
	Ø ext	e	d	b	n	o	c		
15	95	3	24	9.5	4	13.5	65	0.20	AMS2BE15
20	105	3	30	12.5	4	13.5	75	0.24	AMS2BE20
25	115	3	36	14.5	4	13.5	85	0.26	AMS2BE25
32	140	3	46	16.5	4	17.5	100	0.45	AMS2BE32
40	150	4	54	17.5	4	17.5	110	0.65	AMS2BE40
50	165	4	65	19.5	4	17.5	125	0.80	AMS2BE50
65	185	4	81	21.0	4	17.5	145	0.95	AMS2BE65
80	200	5	94	21.0	8	17.5	160	1.38	AMS2BE80
100	220	6	119	23.0	8	17.5	180	1.60	AMS2BE100
125	250	6	145	24.0	8	17.5	210	2.00	AMS2BE125
150	285	7	174	26.0	8	21.5	240	2.60	AMS2BE150
200	340	8	225	29.0	8	21.5	295	3.20	AMS2BE200
250	395	8	280	32.0	12	21.5	350	4.40	AMS2BE250
300	445	8	330	35.0	12	21.5	400	5.80	AMS2BE300

Brides tournantes embouties PN 10 DIN 2642

Adx bichro

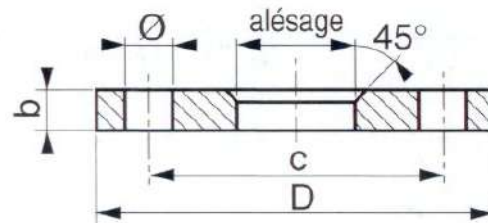
AMSABE



DN	Dimensions (en mm)				Perçage (en mm)			Poids (kg)	Référence Adx Bichromaté
	Ø ext	e	d	b	n	o	c		
15	95	3	24	9.5	4	13.5	65	0.20	AMSABE15
20	105	3	30	12.5	4	13.5	75	0.24	AMSABE20
25	115	3	36	14.5	4	13.5	85	0.26	AMSABE25
32	140	3	46	16.5	4	17.5	100	0.45	AMSABE32
40	150	4	54	17.5	4	17.5	110	0.65	AMSABE40
50	165	4	65	19.5	4	17.5	125	0.80	AMSABE50
65	185	4	81	21.0	4	17.5	145	0.95	AMSABE65
80	200	5	94	21.0	8	17.5	160	1.38	AMSABE80
100	220	6	119	23.0	8	17.5	180	1.60	AMSABE100
125	250	6	145	24.0	8	17.5	210	2.00	AMSABE125
150	285	7	174	26.0	8	21.5	240	2.60	AMSABE150
200	340	8	225	29.0	8	21.5	295	3.20	AMSABE200
250	395	8	280	32.0	12	21.5	350	4.40	AMSABE250
300	445	8	330	35.0	12	21.5	400	5.80	AMSABE300

Brides plates tournantes PN 10/40 < ou = 40
PN 10/16 jusque 150
PN 10 au delà

AMS2BT/ AMS4BT

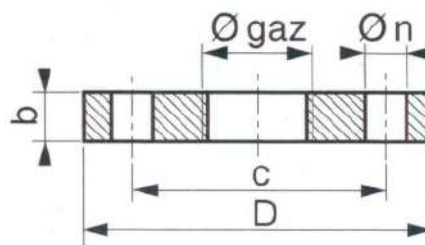


DN	Dimensions (en mm)			Perçage (en mm)			Poids (kg)	Référence 304 L	Référence 316 L
	D	Ø Alésage	b	n	Ø	c			
10	90	19	14	4	14	60	0.60	AMS2BT10	AMS4BT10
15	95	24	14	4	14	65	0.67	AMS2BT15	AMS4BT15
20	105	30	16	4	14	75	0.95	AMS2BT20	AMS4BT20
25	115	36	16	4	14	85	1.10	AMS2BT25	AMS4BT25
32	140	46	16	4	18	100	1.62	AMS2BT32	AMS4BT32
40	150	54	16	4	18	110	1.85	AMS2BT40	AMS4BT40
50	165	65	16	4	18	125	2.45	AMS2BT50	AMS4BT50
65	185	81	18	4	18	145	3.00	AMS2BT65	AMS4BT65
80	200	94	18	8	18	160	3.95	AMS2BT80	AMS4BT80
100	220	119	18	8	18	180	4.40	AMS2BT100	AMS4BT100
125	250	145	18	8	18	210	5.90	AMS2BT125	AMS4BT125
150	285	173	18	8	22	240	7.10	AMS2BT150	AMS4BT150
200	340	225	20	8	22	295	7.90	AMS2BT200	AMS4BT200
250	395	281	26	12	22	350	11.50	AMS2BT250	AMS4BT250
300	445	333	26	12	22	400	13.00	AMS2BT300	AMS4BT300

BRIDES PLATES TARAUEES

Brides plates taraudées PN 10/16

AMS2PT/AMS4PT

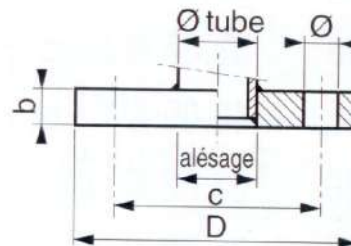


DN	Dimensions (en mm)			Perçage (en mm)			Poids (kg)	Référence 304 L	Référence 316 L
	D	Ø GAZ/BSP	b	n	Ø	c			
10	90	3/8"	14	4	14	60	0.60	AMS2PT10	AMS4PT10
15	95	1/2"	14	4	14	65	0.67	AMS2PT15	AMS4PT15
20	105	3/4"	16	4	14	75	0.95	AMS2PT20	AMS4PT20
25	115	1"	16	4	14	85	1.10	AMS2PT25	AMS4PT25
32	140	1"1/4	16	4	18	100	1.62	AMS2PT32	AMS4PT32
40	150	1"1/2	16	4	18	110	1.85	AMS2PT40	AMS4P40
50	165	2"	18	4	18	125	2.45	AMS2PT50	AMS4PT50
65	185	2"1/2	18	4	18	145	3.00	AMS2PT65	AMS4PT65
80	200	3"	22	8	18	160	3.95	AMS2PT80	AMS4PT80
100	220	4"	22	8	18	180	4.40	AMS2PT100	AMS4PT100

BRIDES PLATES A SOUDER

Brides plates à souder PN 10/40 < ou = 150
PN 10/16 jusque 150
PN 10 au delà

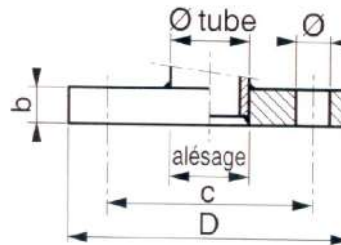
AMS2PAS/ AMS4PAS



DN	Dimensions (en mm)			Perçage (en mm)			Poids (kg)	Référence 304 L	Référence 316 L
	D	Ø Tube	b	n	Ø	c			
10	90	17.2	14	4	14	60	0.60	AMS2PAS10	AMS4PAS10
15	95	21.3	14	4	14	65	0.67	AMS2PAS15	AMS4PAS15
20	105	26.9	16	4	14	75	0.95	AMS2PAS20	AMS4PAS20
25	115	33.7	16	4	14	85	1.10	AMS2PAS25	AMS4PAS25
32	140	42.4	16	4	18	100	1.62	AMS2PAS32	AMS4PAS32
40	150	48.3	16	4	18	110	1.85	AMS2PAS40	AMS4PAS40
50	165	60.3	18	4	18	125	2.45	AMS2PAS50	AMS4PAS50
65	185	76.1	18	4	18	145	3.00	AMS2PAS65	AMS4PAS65
80	200	88.9	22	8	18	160	3.95	AMS2PAS80	AMS4PAS80
100	220	114.3	22	8	18	180	4.40	AMS2PAS100	AMS4PAS100
125	250	139.7	24	8	18	210	5.90	AMS2PAS125	AMS4PAS125
150	285	168.3	24	8	22	240	7.10	AMS2PAS150	AMS4PAS150
200	340	219.1	24	8	22	295	10.00	AMS2PAS200	AMS4PAS200
250	395	273	26	12	22	350	12.80	AMS2PAS250	AMS4PAS250
300	445	323.9	26	12	22	400		AMS2PAS300	AMS4PAS300

Brides plates à souder PN 25/40

AMS2PAS/AMS4PAS

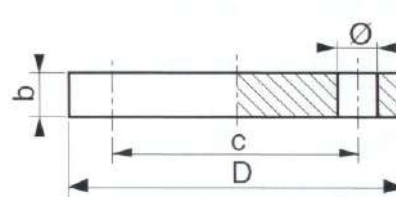


DN	Dimensions (en mm)			Perçage (en mm)			Poids (kg)	Référence 304 L	Référence 316 L
	D	Ø Tube	b	n	Ø	c			
50	165	60.3	20	4	18	125	2.70	AMS2PAS4050	AMS4PAS4050
65	185	76.1	22	8	18	145	3.55	AMS2PAS4065	AMS4PAS4065
80	200	88.9	24	8	18	160	4.33	AMS2PAS4080	AMS4PAS4080
100	235	114.3	26	8	22	190	5.84	AMS2PAS40100	AMS4PAS40100
125	270	139.7	28	8	26	220	8.00	AMS2PAS40125	AMS4PAS40125
150	300	168.3	30	8	26	250	10.50	AMS2PAS40150	AMS4PAS40150

BRIDES PLEINES

Tampons pleins PN 10/40 < ou = 150
PN 10/16 jusque 150
PN 10 au delà

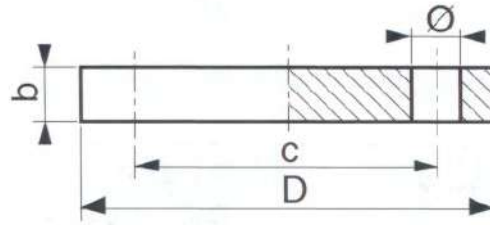
AMS2TP/ AMS4TP



DN	Dimensions (en mm)			Perçage (en mm)			Poids (kg)	Référence 304 L	Référence 316 L
	D	Ø Tube	b	n	Ø	c			
10	90	17.2	14	4	14	60	0.60	AMS2TP10	AMS4TP10
15	95	21.3	14	4	14	65	0.71	AMS2TP15	AMS4TP15
20	105	26.9	16	4	14	75	1.02	AMS2TP20	AMS4TP20
25	115	33.7	16	4	14	85	1.22	AMS2TP25	AMS4TP25
32	140	42.4	16	4	18	100	1.80	AMS2TP32	AMS4TP32
40	150	48.3	16	4	18	110	2.10	AMS2TP40	AMS4TP40
50	165	60.3	18	4	18	125	2.85	AMS2TP50	AMS4TP50
65	185	76.1	18	4	18	145	3.65	AMS2TP65	AMS4TP65
80	200	88.9	22	8	18	160	5.05	AMS2TP80	AMS4TP80
100	220	114.3	22	8	18	180	6.20	AMS2TP100	AMS4TP100
125	250	139.7	24	8	18	210	8.85	AMS2TP125	AMS4TP125
150	285	168.3	24	8	22	240	11.40	AMS2TP150	AMS4TP150
200	340	219.1	24	8	22	295	17.90	AMS2TP200	AMS4TP200
250	395	273	26	12	22	350		AMS2TP250	AMS4TP250
300	445	323.9	26	12	22	400		AMS2TP300	AMS4TP300

Tampons pleins PN 25/40

AMS4TP



DN	Dimensions (en mm)			Perçage (en mm)			Poids (kg)	Référence 316 L
	D	Ø Tube	b	n	Ø	c		
10	90	17.2	14	4	14	60	0.65	AMS4TP4010
15	95	21.3	14	4	14	65	0.95	AMS4TP4015
20	105	26.9	16	4	14	75	1.10	AMS 4TP4020
25	115	33.7	16	4	14	85	1.40	AMS4TP4025
32	140	42.4	18	4	18	100	2	AMS 4TP4032
40	150	48.3	18	4	18	110	2.30	AMS4TP4040
50	165	60.3	20	4	18	125	3.10	AMS4TP4050
65	185	76.3	22	8	18	145	4.00	AMS4TP4065
80	200	88.9	24	8	18	160	5.50	AMS 4TP4080
100	235	114.3	26	8	22	190	7	AMS 4TP40100

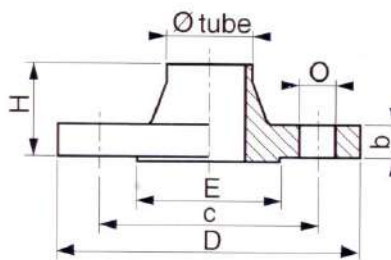
BRIDES COLLERETTES

Brides collerettes type 11B PN 10/40 < ou = 150

PN 10/16 jusque 150

PN 10 au delà

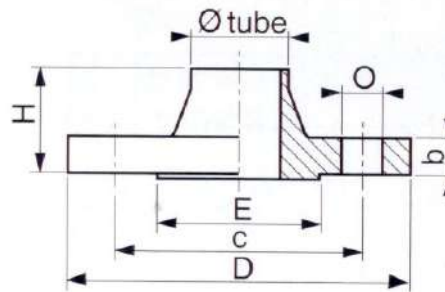
AMS2COL



DN	Dimensions (en mm)					Perçage (en mm)			Poids (kg)	Référence 304 L	Référence 316 L
	D	E	Ø Tube	b	H	n	O	c			
15	95	45	21.3	14	35	4	14	65	0.70	AMS2COL15	AMS4COL15
20	105	58	26.9	16	38	4	14	75	1.00	AMS2COL20	AMS4COL20
25	115	68	33.7	16	38	4	14	85	1.20	AMS2COL25	AMS4COL25
32	140	78	42.4	16	40	4	18	100	1.75	AMS2COL32	AMS4COL32
40	150	88	48.3	16	42	4	18	110	1.85	AMS2COL40	AMS4COL40
50	165	102	60.3	18	45	4	18	125	2.55	AMS2COL50	AMS4COL50
65	185	122	76.1	18	45	4	18	145	3.10	AMS2COL65	AMS4COL65
80	200	138	88.9	20	50	8	18	160	4.00	AMS2COL80	AMS4COL80
100	220	158	114.3	20	52	8	18	180	4.55	AMS2COL100	AMS4COL100
125	250	188	139.7	22	55	8	18	210	6.20	AMS2COL125	AMS4COL125
150	285	212	168.3	22	55	8	22	240	7.80	AMS2COL150	AMS4COL150
200	340	268	219.1	24	62	8	22	295	11.00	AMS2COL200	AMS4COL200

Brides collerettes type 11B PN 25/40

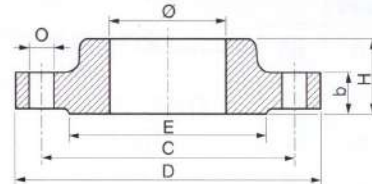
AMS4COL



DN	Dimensions (en mm)					Perçage (en mm)			Poids (kg)	Référence 316
	D	E	\varnothing Tube	b	H	n	O	c		
50	165	102	60.3	20	48	4	18	125	2.8	AMS4COL4050
65	185	122	76.1	22	52	8	18	145	3.40	AMS4COL4065
80	200	138	88.9	24	58	8	18	160	4.40	AMS4COL 4080
100	235	162	114.3	24	65	8	22	190	5	AMS4COL40100
125	270	188	139.7	26	68	8	26	220	9.07	AMS4COL40125
150	300	218	168.3	28	75	8	26	250	11.80	AMS4COL40150

BRIDES ANSI 150 LBS

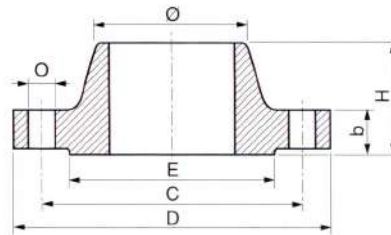
Brides slip - on PN20 150Lbs AMS2SO



DN	Dimensions (en mm)					Perçage (en mm)			Poids (kg)	Référence 304 L	Référence 316 L
	D	E	Ø Tube	b	H	n	O	c			
15	89	34.9	21.3	11.2	16	4	15.8	60.3	0.50	AMS2SO2015	AMS4SO2015
20	99	42.4	26.7	12.7	16	4	15.8	69.8	0.90	AMS2SO2020	AMS4SO2020
25	108	50.9	33.4	14.3	17	4	15.8	79.4	0.90	AMS2SO2025	AMS4SO2025
32	117	63.5	42.2	15.9	21	4	15.8	88.9	1.40	AMS2SO2032	AMS4SO2032
40	127	73	48.3	17.5	22	4	15.8	98.4	1.40	AMS2SO2040	AMS4SO2040
50	152	82.1	60.3	19.1	25	4	19.0	120.6	2.30	AMS2SO2050	AMS4SO2050
65	178	104.8	73.1	22.3	29	4	19.0	139.7	3.20	AMS2SO2065	AMS4SO2065
80	190	127.0	88.9	23.9	30	4	19.0	152.4	3.60	AMS2SO2080	AMS4SO2080
100	229	157.2	114.3	23.9	33	8	19.0	190.5	5.90	AMS2SO20100	AMS4SO20100
125	254	185.7	141.2	23.9	37	8	22.2	215.9	6.80	AMS2SO20125	AMS4SO20125
150	279	215.9	168.3	25.4	40	8	22.2	241.3	8.60	AMS2SO20150	AMS4SO20150
200	343	269.9	219.1	28.6	44	8	22.2	298.4	13.60	AMS2SO20200	AMS4SO20200

Brides welding neck PN20 150Lbs

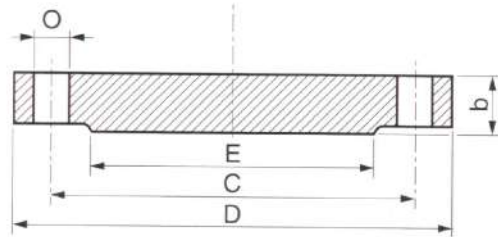
AMS2WN



DN	Dimensions (en mm)					Perçage (en mm)			Poids (kg)	Référence 304 L	Référence 316 L
	D	E	Ø Tube	b	H	n	O	c			
15	89	34.9	21.3	11.2	48	4	15.8	60.3	0.900	AMS2WN2015	AMS4WN2015
20	99	42.4	26.7	12.7	52	4	15.8	69.8	0.900	AMS2WN2020	AMS4WN2020
25	108	50.9	33.4	14.3	56	4	15.8	79.4	1.400	AMS2WN2025	AMS4WN2025
32	117	63.5	42.4	15.9	57	4	15.8	88.9	1.400	AMS2WN2032	AMS4WN2032
40	127	73	48.3	17.5	62	4	15.8	98.4	1.800	AMS2WN2040	AMS4WN2040
50	152	82.1	60.3	19.1	63	4	19.0	120.6	2.700	AMS2WN2050	AMS4WN2050
65	178	104.8	73.1	22.3	70	4	19.0	139.7	3.600	AMS2WN2065	AMS4WN2065
80	190	127.0	88.9	23.9	70	4	19.0	152.4	4.500	AMS2WN2080	AMS4WN2080
100	229	157.2	114.3	23.9	76	8	19.0	190.5	6.800	AMS2WN20100	AMS4WN20100
125	254	185.7	141.2	23.9	89	8	22.2	215.9	8.60	AMS2WN20125	AMS4WN20125
150	279	215.9	168.4	25.4	89	8	22.2	241.3	10.900	AMS2WN20150	AMS4WN20150
200	343	269.9	219.1	28.6	102	8	22.2	298.4	17.700	AMS2WN20200	AMS4WN20200

Tampons blind PN20 150Lbs

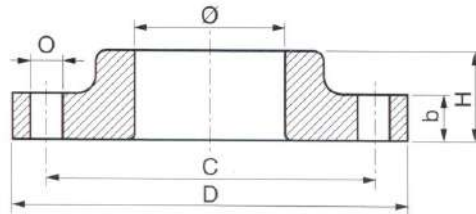
AMS2B



DN	Dimensions (mm)			Perçage (en mm)			Poids (kg)	Référence 304 L	Référence 316 L
	D	E	b	n	O	c			
15	89	34.9	11.2	4	15.8	60.3	0.500	AMS2B2015	AMS4B2015
20	99	42.4	12.7	4	15.8	69.8	0.900	AMS2B2020	AMS4B2020
25	108	50.9	14.3	4	15.8	79.4	0.900	AMS2B2025	AMS4B2025
32	117	63.5	15.9	4	15.8	88.9	1.400	AMS2B2032	AMS4B2032
40	127	73	17.5	4	15.8	98.4	1.800	AMS2B2040	AMS4B2040
50	152	82.1	19.1	4	19.0	120.6	2.300	AMS2B2050	AMS4B2050
65	178	104.8	22.3	4	19.0	139.7	3.200	AMS2B2065	AMS4B2065
80	190	127.0	23.9	4	19.0	152.4	4.100	AMS2B2080	AMS4B2080
100	229	157.2	23.9	8	19.0	190.5	7.700	AMS2B20100	AMS4B20100
125	254	185.7	23.9	8	22.2	215.9	9.100	AMS2B20125	AMS4B20125
150	279	115.9	25.4	8	22.2	241.3	11.800	AMS2B20150	AMS4B20150
200	343	269.9	28.6	8	22.2	298.4	26.00	AMS2B20200	AMS4B20200

Brides lap – joint PN20 150Lbs

AMS2LJ

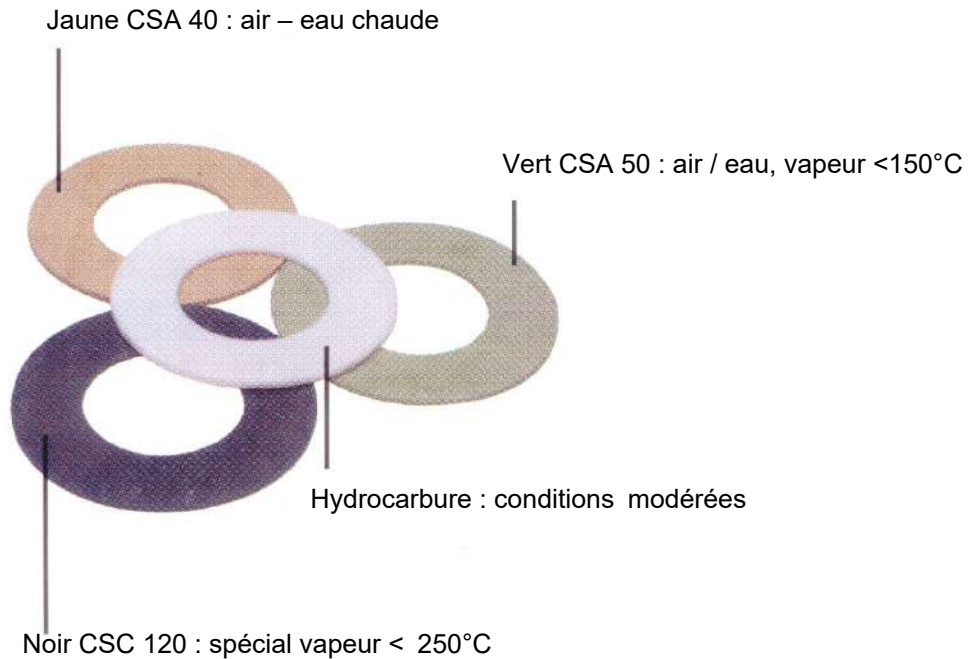


DN	Dimensions (en mm)				Perçage (en mm)			Poids (kg)	Référence 304 L	Référence 316 L
	D	Ø Tube	b	H	n	O	c			
15	89	21.3	11.2	48	4	15.8	60.3	0.500	AMS2LJ2015	AMS4LJ2015
20	99	26.7	12.7	52	4	15.8	69.8	0.900	AMS2LJ2020	AMS4LJ2020
25	108	33.4	14.3	56	4	15.8	79.4	0.900	AMS2LJ2025	AMS4LJ2025
32	117	42.2	15.9	57	4	15.8	88.9	1.400	AMS2LJ2032	AMS4LJ2032
40	127	48.3	17.5	62	4	15.8	98.4	1.400	AMS2LJ2040	AMS4LJ2040
50	152	60.3	19.1	63	4	19.0	120.6	2.300	AMS2LJ2050	AMS4LJ2050
65	178	73.1	22.3	70	4	19.0	139.7	3.200	AMS2LJ2065	AMS4LJ2065
80	190	88.9	23.9	70	4	19.0	152.4	3.600	AMS2LJ2080	AMS4LJ2080
100	229	114.3	23.9	76	8	19.0	190.5	5.900	AMS2LJ20100	AMS4LJ20100
125	254	141.2	23.9	89	8	22.2	215.9	6.800	AMS2LJ20125	AMS4LJ20125
150	279	168.4	25.4	89	8	22.2	241.3	8.600	AMS2LJ20150	AMS4LJ20150
200	343	219.1	28.6	102	8	22.2	298.4	13.600	AMS2LJ20200	AMS4LJ20200

ACCESOIRES POUR BRIDES

Joint PN10 NFE 29.900.2

AMSJB/ AMSJCSC/ AMSJCSA/ AMSJPTFE



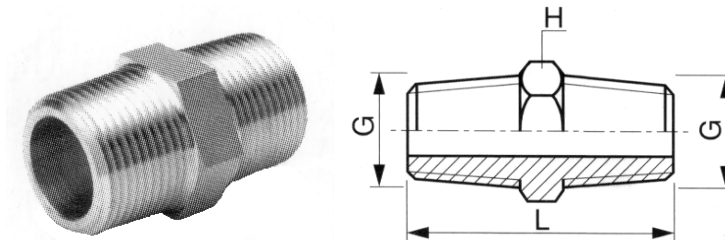
DN	ELASTOMERE COMPRIME SANS AMIANTE			PTFE
	JAUNE CSA 40	NOIR CSC 15	VERT CSA 50	
	2 mm	2 mm	2 mm	2 mm
	Référence	Référence	Référence	Référence
10 (46X18)	AMSJB10	AMSJCSC10	AMSJCSA10	AMSJPTFE10
15 (51X22)	AMSJB15	AMSJCSC15	AMSJCSA15	AMSJPTFE15
20 (61X27)	AMSJB20	AMSJCSC20	AMSJCSA20	AMSJPTFE20
25 (71X34)	AMSJB25	AMSJCSC25	AMSJCSA25	AMSJPTFE25
32 (82X43)	AMSJB32	AMSJCSC32	AMSJCSA32	AMSJPTFE32
40 (92X49)	AMSJB40	AMSJCSC40	AMSJCSA40	AMSJPTFE40
50 (107X61)	AMSJB50	AMSJCSC50	AMSJCSA50	AMSJPTFE50
65 (127X77)	AMSJB65	AMSJCSC65	AMSJCSA65	AMSJPTFE65
80 (142X89)	AMSJB80	AMSJCSC80	AMSJCSA80	AMSJPTFE80
100 (162X115)	AMSJB100	AMSJCSC100	AMSJCSA100	AMSJPTFE100
125 (192X141)	AMSJB125	AMSJCSC125	AMSJCSA125	AMSJPTFE125
150 (218X169)	AMSJB150	AMSJCSC150	AMSJCSA150	AMSJPTFE 150
200 (273X220)	AMSJB200	AMSJCSC200	AMSJCSA200	AMSJPTFE200
250 (327X273)	AMSJB250	AMSJCSC250	AMSJCSA250	AMSJPTFE250
300 (378X324)	AMSJB300	AMSJCSC300	AMSJCSA300	AMSJPTFE300

SERIE 3000 Extrémités filetées

- 304L et 316L -

Mamelons hexagonaux NPT

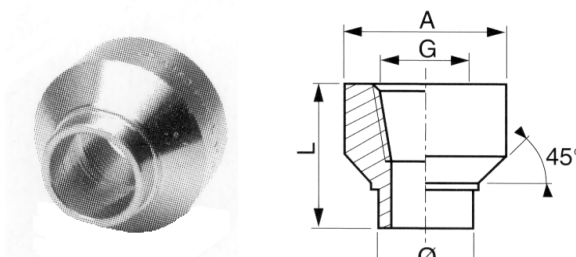
AMSS3.MH



DN	G	L	H	Poids (kg)	Référence 304L	Référence 316L
8	1/4"	36	15	0.030	AMSS32MH8	AMSS34MH8
12	3/8"	40	18	0.045	AMSS32MH12	AMSS34MH12
15	1/2"	48	22	0.070	AMSS32MH15	AMSS34MH15
20	3/4"	52	27	0.120	AMSS32MH20	AMSS34MH20
25	1"	60	35	0.205	AMSS32MH25	AMSS34MH25
32	1"1/4	64	46	0.400	AMSS32MH32	AMSS34MH32
40	1"1/2	68	50	0.550	AMSS32MH40	AMSS34MH40
50	2"	71	62	0.740	AMSS32MH50	AMSS34MH50

Bossages à souder taraudés NPT

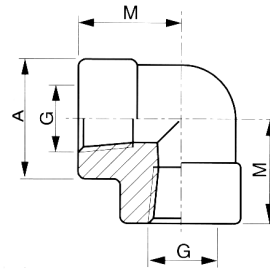
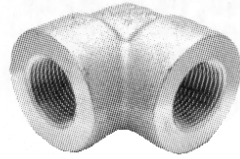
AMSS3.BO



DN	G	L	A	Ø	Poids (kg)	Référence 304L	Référence 316L
8	1/4"	30.5	28	13.5	0.080	AMSS32BO8	AMSS34BO8
12	3/8"	30.5	32	17.2	0.095	AMSS32BO12	AMSS34BO12
15	1/2"	33.5	38	21.3	0.150	AMSS32BO15	AMSS34BO15
20	3/4"	35	44.5	26.7	0.225	AMSS32BO20	AMSS34BO20
25	1"	43	57.5	33.4	0.445	AMSS32BO25	AMSS34BO25
32	1"1/4	48	63.5	42.4	0.730	AMSS32BO32	AMSS34BO32
40	1"1/2	51	76.1	48.3	1.050	AMSS32BO40	AMSS34BO40
50	2"	57.5	92	60.3	1.340	AMSS32BO50	AMSS34BO50

Coudes femelle femelle à 90° taraudés NPT

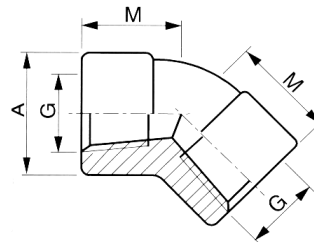
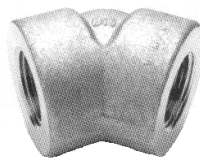
AMSS3.CFF



DN	G	M	A	Poids (kg)	Référence 304L	Référence 316L
8	1/4"	25	25	0.145	AMSS32CFF8	AMSS34CFF8
12	3/8"	29	33	0.290	AMSS32CFF12	AMSS34CFF12
15	1/2"	33	38	0.415	AMSS32CFF15	AMSS34CFF15
20	3/4"	38	46	0.665	AMSS32CFF20	AMSS34CFF20
25	1"	44	56	1.130	AMSS32CFF25	AMSS34CFF25
32	1"1/4	51	62	1.270	AMSS32CFF32	AMSS34CFF32
40	1"1/2	60	75	2.405	AMSS32CFF40	AMSS34CFF40
50	2"	64	84	2.695	AMSS32CFF50	AMSS34CFF50

Coudes femelle femelle à 45° taraudés NPT

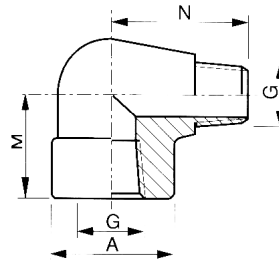
AMSS3.CFF45



DN	G	M	A	Poids (kg)	Référence 304L	Référence 316L
8	1/4"	19	25	0.120	AMSS32CFF458	AMSS34CFF458
12	3/8"	22	33	0.240	AMSS32CFF4512	AMSS34CFF4512
15	1/2"	25	38	0.325	AMSS32CFF4515	AMSS34CFF4515
20	3/4"	29	46	0.550	AMSS32CFF4520	AMSS34CFF4520
25	1"	33	56	0.900	AMSS32CFF4525	AMSS34CFF4525
32	1"1/4	35	62	1.100	AMSS32CFF4532	AMSS34CFF4532
40	1"1/2	43	75	1.950	AMSS32CFF4540	AMSS34CFF4540
50	2"	45	84	2.220	AMSS32CFF4550	AMSS34CFF4550

Coudes à 90° mâle femelle NPT

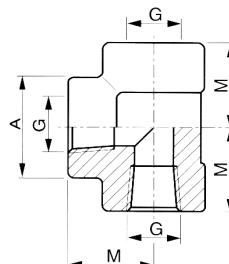
AMSS3.CMF



DN	G	M	N	A	Poids (kg)	Référence 304L	Référence 316L
8	1/4"	25	32	25	0.140	AMSS32CMF8	AMSS34CMF8
12	3/8"	29	37.5	33	0.275	AMSS32CMF12	AMSS34CMF12
15	1/2"	33	41.5	38	0.460	AMSS32CMF15	AMSS34CMF15
20	3/4"	38	47.5	46	0.670	AMSS32CMF20	AMSS34CMF20
25	1"	44	57	56	1.100	AMSS32CMF25	AMSS34CMF25
32	1"1/4	51	66.5	62	1.520	AMSS32CMF32	AMSS34CMF32
40	1"1/2	60	71.5	75	2.450	AMSS32CMF40	AMSS34CMF40
50	2"	64	84.5	84	3.855	AMSS32CMF50	AMSS34CMF50

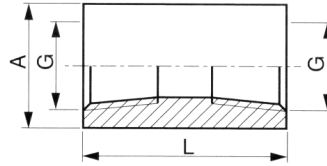
Tés taraudés NPT

AMSS3.T



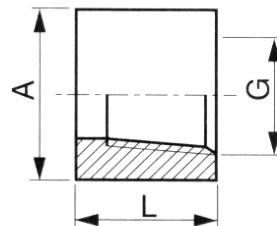
DN	G	M	A	Poids (kg)	Référence 304L	Référence 316L
8	1/4"	25	25	0.180	AMSS32T8	AMSS34T8
12	3/8"	29	33	0.365	AMSS32T12	AMSS34T12
15	1/2"	33	38	0.545	AMSS32T15	AMSS34T15
20	3/4"	38	46	0.830	AMSS32T20	AMSS34T20
25	1"	44	56	1.420	AMSS32T25	AMSS34T25
32	1"1/4	51	62	1.700	AMSS32T32	AMSS34T32
40	1"1/2	60	75	3.200	AMSS32T40	AMSS34T40
50	2"	64	84	3.500	AMSS32T50	AMSS34T50

Manchons taraudés NPT AMSS3.MA



DN	G	L	A	Poids (kg)	Référence 304L	Référence 316L
8	1/4"	35	19	0.065	AMSS32MA8	AMSS34MA8
12	3/8"	38	22	0.065	AMSS32MA12	AMSS34MA12
15	1/2"	48	29	0.145	AMSS32MA15	AMSS34MA15
20	3/4"	51	35	0.225	AMSS32MA20	AMSS34MA20
25	1"	60	44	0.440	AMSS32MA25	AMSS34MA25
32	1"1/4	67	57	0.725	AMSS32MA32	AMSS34MA32
40	1"1/2	79	64	1.040	AMSS32MA40	AMSS34MA40
50	2"	86	76	1.340	AMSS32MA50	AMSS34MA50

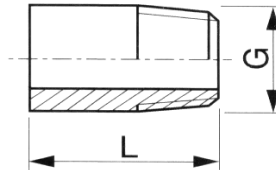
Demi-manchons taraudés NPT AMSS3.DM



DN	G	L	A	Poids (kg)	Référence 304L	Référence 316L
8	1/4"	17.5	19	0.035	AMSS32DM8	AMSS34DM8
12	3/8"	19	22	0.030	AMSS32DM12	AMSS34DM12
15	1/2"	24	29	0.070	AMSS32DM15	AMSS34DM15
20	3/4"	25.5	35	0.105	AMSS32DM20	AMSS34DM20
25	1"	30	44	0.210	AMSS32DM25	AMSS34DM25
32	1"1/4	33.5	57	0.355	AMSS32DM32	AMSS34DM32
40	1"1/2	39.5	64	1.040	AMSS32DM40	AMSS34DM40
50	2"	43	76	1.340	AMSS32DM50	AMSS34DM50

Embout mâles NPT SCH 80

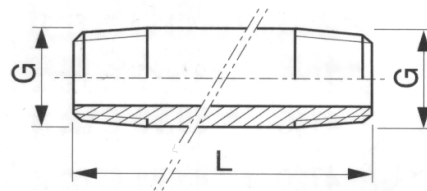
AMSS3.EM



DN	G	L	Poids (kg)	Référence 304L	Référence 316L
8	1/4"	36	0.030	AMSS32EM8	AMSS34EM8
12	3/8"	36	0.040	AMSS32EM12	AMSS34EM12
15	1/2"	36	0.055	AMSS32EM15	AMSS34EM15
20	3/4"	36	0.075	AMSS32EM20	AMSS34EM20
25	1"	36	0.105	AMSS32EM25	AMSS34EM25
32	1"1/4	48	0.185	AMSS32EM32	AMSS34EM32
40	1"1/2	48	0.295	AMSS32EM40	AMSS34EM40
50	2"	48	0.395	AMSS32EM50	AMSS34EM50

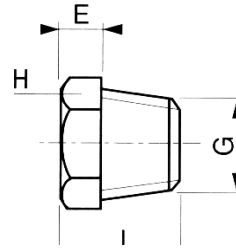
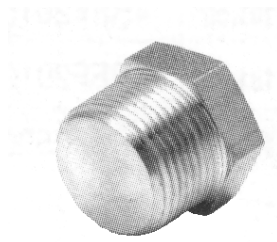
Mamelons tubes NPT SCH 80

AMSS3.MCL



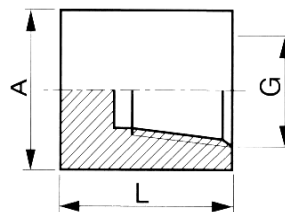
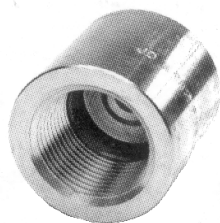
DN	G	75 mm		100 mm	
		Poids (kg)	Référence 316L	Poids (kg)	Référence 316L
8	1/4"	0.055	AMSS34MCL758	0.075	AMSS34MC8
12	3/8"	0.075	AMSS34MCL7512	0.100	AMSS34MC12
15	1/2"	0.110	AMSS34MCL7515	0.150	AMSS34MC15
20	3/4"	0.150	AMSS34MCL7520	0.200	AMSS34MC20
25	1"	0.205	AMSS34MCL7525	0.305	AMSS34MC25
32	1"1/4	0.270	AMSS34MCL7532	0.365	AMSS34MC32
40	1"1/2	0.445	AMSS34MCL7540	0.590	AMSS34MC40
50	2"	0.505	AMSS34MCL7550	0.685	AMSS34MC50

Bouchons mâles tête hexagonale NPT AMSS3.BM



DN	G	L	E	H	Poids (kg)	Référence 304L	Référence 316L
8	1/4"	17	6	16	0.025	AMSS32BM8	AMSS34BM8
12	3/8"	21	8	17.5	0.040	AMSS32BM12	AMSS34BM12
15	1/2"	23	8	22	0.065	AMSS32BM15	AMSS34BM15
20	3/4"	26	10	27	0.125	AMSS32BM20	AMSS34BM20
25	1"	29	10	35	0.215	AMSS32BM25	AMSS34BM25
32	1"1/4	35	14	44.5	0.415	AMSS32BM32	AMSS34BM32
40	1"1/2	37	16	51	0.575	AMSS32BM40	AMSS34BM40
50	2"	39	17	63.5	0.990	AMSS32BM50	AMSS34BM50

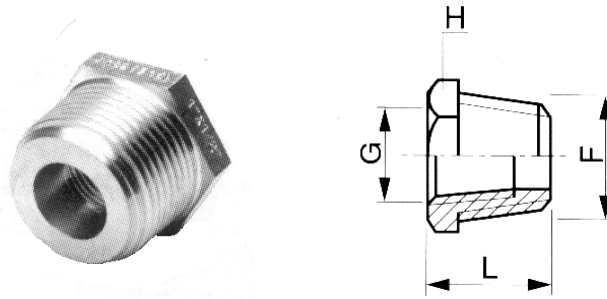
Bouchons femelle NPT AMSS3.BF



DN	G	L	A	Poids (kg)	Référence 304L	Référence 316L
8	1/4"	25	19	0.050	AMSS32BF8	AMSS34BF8
12	3/8"	25	22	0.080	AMSS32BF12	AMSS34BF12
15	1/2"	32	29	0.115	AMSS32BF15	AMSS34BF15
20	3/4"	37	35	0.200	AMSS32BF20	AMSS34BF20
25	1"	41	44	0.310	AMSS32BF25	AMSS34BF25
32	1"1/4	44	57	0.600	AMSS32BF32	AMSS34BF32
40	1"1/2	44	64	0.725	AMSS32BF40	AMSS34BF40
50	2"	48	76	1.050	AMSS32BF50	AMSS34BF50

Réductions hexagonales mâle femelle NPT

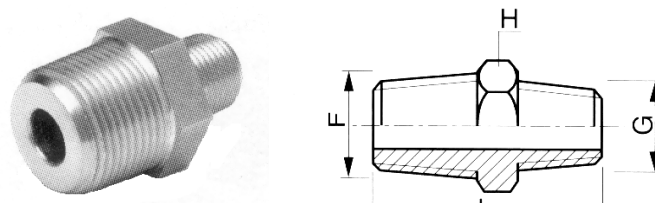
AMSS3.BF



DN	F	G	L	H	Poids (kg)	Référence 304L	Référence 316L
12-8	3/8"	1/4"	17	17.5	0.030	AMSS32RMF128	AMSS34RMF128
15-12	1/2"	3/8"	20	22	0.035	AMSS32RMF1512	AMSS34RMF1512
15-8	1/2"	1/4"	20	22	0.040	AMSS32RMF158	AMSS34RMF158
20-15	3/4"	1/2"	22	27	0.050	AMSS32RMF2015	AMSS34RMF2015
25-20	1"	3/4"	25	35	0.095	AMSS32RMF2520	AMSS34RMF2520
25-15	1"	1/2"	25	35	0.145	AMSS32RMF2515	AMSS34RMF2515
32-25	1"1/4	1"	28	44.5	0.215	AMSS32RMF3225	AMSS34RMF3225
40-25	1"1/2	1"	29	51	0.380	AMSS32RMF4025	AMSS34RMF4025
50-40	2"	1"1/2	31	63.5	0.470	AMSS32RMF5040	AMSS34RMF5040

Réductions hexagonales mâle mâle NPT

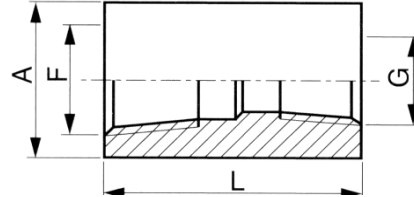
AMSS3.RMM



DN	F	G	L	H	Poids (kg)	Référence 304L	Référence 316L
8-5	1/4"	1/8"	31	15	0.035	AMSS32RMM85	AMSS34RMM85
12-8	3/8"	1/4"	39	18	0.055	AMSS32RMM128	AMSS34RMM128
15-12	1/2"	3/8"	44	22	0.075	AMSS32RMM1512	AMSS34RMM1512
15-8	1/2"	1/4"	43	22	0.090	AMSS32RMM158	AMSS34RMM158
20-15	3/4"	1/2"	50	27	0.125	AMSS32RMM2015	AMSS34RMM2015
20-12	3/4"	3/8"	46	27	0.140	AMSS32RMM2012	AMSS34RMM2012
25-20	1"	3/4"	56	35	0.380	AMSS32RMM2520	AMSS34RMM2520
25-15	1"	1/2"	55	35	0.400	AMSS32RMM2515	AMSS34RMM2515
40-25	1"1/2	1"	67	50	0.710	AMSS32RMM4025	AMSS34RMM4025
50-40	2"	1"1/2	70	62	0.905	AMSS32RMM5040	AMSS34RMM5040

Réductions femelle femelle NPT

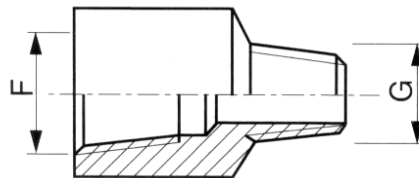
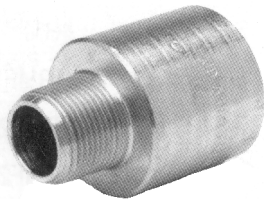
AMSS3.RFF



DN	F	G	L	A	Poids (kg)	Référence 304L	Référence 316L
12-8	3/8"	1/4"	38	22	0.140	AMSS32RFF128	AMSS34RFF128
15-12	1/2"	3/8"	48	28	0.180	AMSS32RFF1512	AMSS34RFF1512
15-8	1/2"	1/4"	48	28	0.210	AMSS32RFF158	AMSS34RFF158
20-15	3/4"	1/2"	51	35	0.220	AMSS32RFF2015	AMSS34RFF2015
20-12	3/4"	3/8"	51	35	0.260	AMSS32RFF2012	AMSS34RFF2012
25-20	1"	3/4"	60	44	0.475	AMSS32RFF2520	AMSS34RFF2520
25-15	1"	1/2"	60	44	0.410	AMSS32RFF2515	AMSS34RFF2515
32-25	1"1/4	1"	67	57	0.920	AMSS32RFF3225	AMSS34RFF3225
40-32	1"1/2	1"1/4	79	64	1.300	AMSS32RFF4025	AMSS34RFF4025
50-40	2"	1"1/2	86	76	1.650	AMSS32RFF5040	AMSS34RFF5040

Réductions femelle mâle NPT

AMSS3.RFM



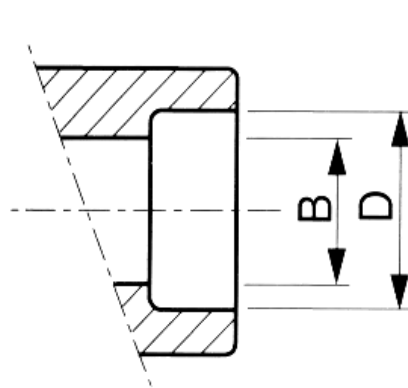
DN	F	G	Poids (kg)	Référence 304L	Référence 316L
12-8	3/8"	1/4"	NOUS CONSULTER		
15-12	1/2"	3/8"			
20-15	3/4"	1/2"			
25-20	1"	3/4"			
32-25	1"1/4	1"			
40-32	1"1/2	1"1/4			
50-40	2"	1"1/2			

SERIE 3000 EXTREMITES A SOUDER

SOCKET WELDED

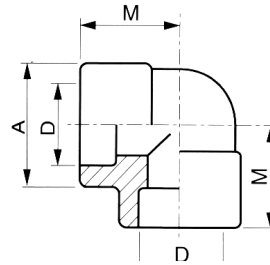
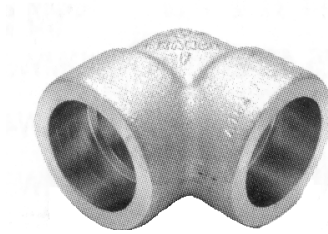
- 304L et 316L -

Diamètres intérieurs des raccords à souder SW



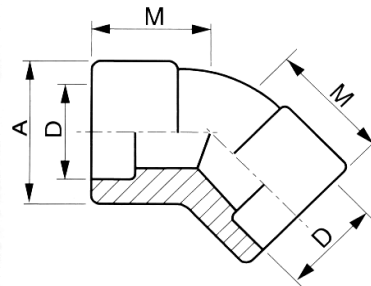
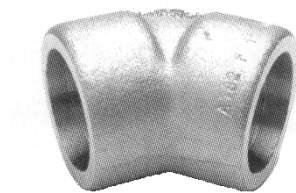
DN	Pouces	D mini	D maxi	B mini	B maxi
8	1/4"	14.10	14.35	8.50	10.00
12	3/8"	17.55	17.80	11.80	13.30
15	1/2"	21.10	21.95	15.00	16.60
20	3/4"	27.05	27.30	20.20	21.70
25	1"	33.80	34.05	25.90	27.40
32	1"1/4	42.55	42.80	34.30	35.80
40	1"1/2	48.65	48.90	40.10	41.70
50	2"	61.10	61.35	51.70	53.50

Coudes à 90° SW AMSS3.CFFW



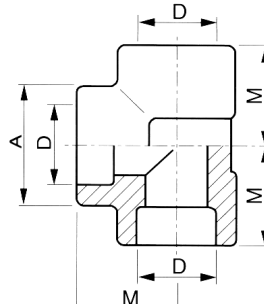
DN	D	M	A	Poids (kg)	Référence 304L	Référence 316L
8	1/4"	22	22	0.135	AMSS32CFFW8	AMSS34CFFW8
12	3/8"	25	25	0.115	AMSS32CFFW12	AMSS34CFFW12
15	1/2"	27	31	0.245	AMSS32CFFW15	AMSS34CFFW15
20	3/4"	34	36	0.330	AMSS32CFFW20	AMSS34CFFW20
25	1"	36	45	0.515	AMSS32CFFW25	AMSS34CFFW25
32	1"1/4	41	55	0.710	AMSS32CFFW32	AMSS34CFFW32
40	1"1/2	46	60	0.930	AMSS32CFFW40	AMSS34CFFW40
50	2"	56	75	1.565	AMSS32CFFW50	AMSS34CFFW50

Coudes à 45° SW AMSS3.CFFW45



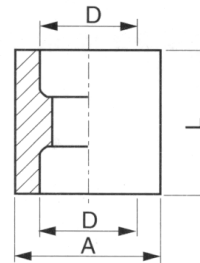
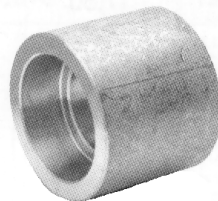
DN	D	M	A	Poids (kg)	Référence 304L	Référence 316L
8	1/4"	19	22	0.115	AMSS32CFFW458	AMSS34CFFW458
12	3/8"	19	25	0.230	AMSS32CFFW4512	AMSS34CFFW4512
15	1/2"	23	31	0.310	AMSS32CFFW4515	AMSS34CFFW4515
20	3/4"	27	36	0.525	AMSS32CFFW4520	AMSS34CFFW4520
25	1"	28	45	0.855	AMSS32CFFW4525	AMSS34CFFW4525
32	1"1/4	31	55	1.045	AMSS32CFFW4532	AMSS34CFFW4532
40	1"1/2	35	60	1.850	AMSS32CFFW4540	AMSS34CFFW4540
50	2"	42	75	2.100	AMSS32CFFW4550	AMSS34CFFW4550

Tés SW AMSS3.TW



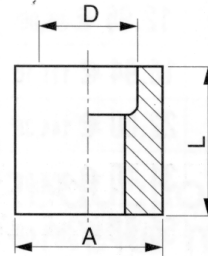
DN	D	M	A	Poids (kg)	Référence 304L	Référence 316L
8	1/4"	22	22	0.175	AMSS32TW8	AMSS34TW8
12	3/8"	25	25	0.135	AMSS32TW12	AMSS34TW12
15	1/2"	27	31	0.310	AMSS32TW15	AMSS34TW15
20	3/4"	34	36	0.415	AMSS32TW20	AMSS34TW20
25	1"	36	45	0.630	AMSS32TW25	AMSS34TW25
32	1"1/4	41	55	0.980	AMSS32TW32	AMSS34TW32
40	1"1/2	46	60	1.305	AMSS32TW40	AMSS34TW40
50	2"	56	75	2.070	AMSS32TW50	AMSS34TW50

Manchons SW AMSS3.MAW



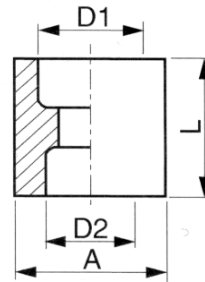
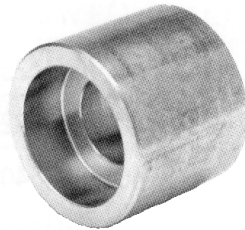
DN	D	L	A	Poids (kg)	Référence 304L	Référence 316L
8	1/4"	26	22	0.055	AMSS32MAW8	AMSS34MAW8
12	3/8"	26	25	0.055	AMSS32MAW12	AMSS34MAW12
15	1/2"	29	31	0.120	AMSS32MAW15	AMSS34MAW15
20	3/4"	34	36	0.145	AMSS32MAW20	AMSS34MAW20
25	1"	37	45	0.235	AMSS32MAW25	AMSS34MAW25
32	1"1/4	38	55	0.335	AMSS32MAW32	AMSS34MAW32
40	1"1/2	38	60	0.430	AMSS32MAW40	AMSS34MAW40
50	2"	51	75	0.760	AMSS32MAW50	AMSS34MAW50

Demi-manchons SW AMSS3.DMW



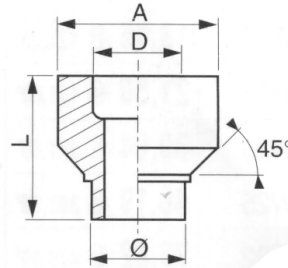
DN	D	L	A	Poids (kg)	Référence 304L	Référence 316L
8	1/4"	27	22	0.060	AMSS32DMW8	AMSS4DMW8
12	3/8"	28	25	0.070	AMSS32DMW12	AMSS34DMW12
15	1/2"	33	31	0.150	AMSS32DMW15	AMSS34DMW15
20	3/4"	36	36	0.180	AMSS32DMW20	AMSS34DMW20
25	1"	42	45	0.305	AMSS32DMW25	AMSS34DMW25
32	1"1/4	43	55	0.430	AMSS32DMW32	AMSS34DMW32
40	1"1/2	45	60	0.455	AMSS32DMW40	AMSS34DMW40
50	2"	56	75	0.930	AMSS32DMW50	AMSS34DMW50

Manchons réduits SW AMSS3.RFFW



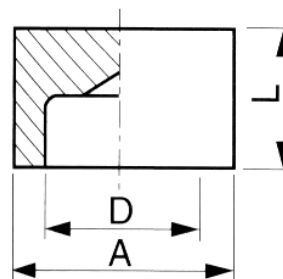
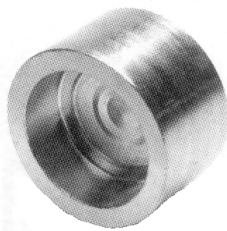
DN	D1	D2	L	A	Poids (kg)	Référence 304L	Référence 316L
12-8	3/8"	1/4"	25	25	0.110	AMSS32RFFW128	AM S34RFFW128
15-12	1/2"	3/8"	29	31	0.135	AMSS32RFFW1512	AMSS34RFFW1512
15-8	1/2"	1/4"	29	31	0.160	AMSS32RFFW158	AMSS34RFFW158
20-15	3/4"	1/2"	35	36	0.170	AMSS32RFFW2015	AMSS34RFFW2015
25-20	1"	3/4"	38	45	0.360	AMSS32RFFW2520	AMSS34RFFW2520
25-15	1"	1/2"	38	45	0.310	AMSS32RFFW2515	AMSS34RFFW2515
32-25	1"1/4	1"	38	55	0.555	AMSS32RFFW3225	AMSS34RFFW3225
40-25	1"1/2	1"	38	60	1.250	AMSS 2RFFW4025	AMSS34RFFW4025

Bossages à souder SW AMSS3.BOW



DN	D	L	A	Ø	Poids (kg)	Référence 304L	Référence 316L
8	1/4"	30.5	28	13.5	0.075	AM S32BOW8	AMS34BOW8
12	3/8"	30.5	32	17.2	0.105	AMSS32BOW12	AMSS34BOW12
15	1/2"	33.5	38	21.3	0.155	AMSS32BOW15	AMSS34BOW15
20	3/4"	35	44.5	26.7	0.210	AMSS32BOW20	AMSS34BOW20
25	1"	43	57.5	33.4	0.415	AMSS32BOW25	AMSS34BOW25
32	1"1/4	48	63.5	42.4	0.700	AMSS32BOW32	AMSS34BOW32
40	1"1/2	51	76.1	48.3	0.890	AMSS32BOW40	AMSS34BOW40
50	2"	57.5	92	60.3	1.405	AMSS32BOW50	AMSS34BOW50

Bouchons femelles SW AMSS3.BFW

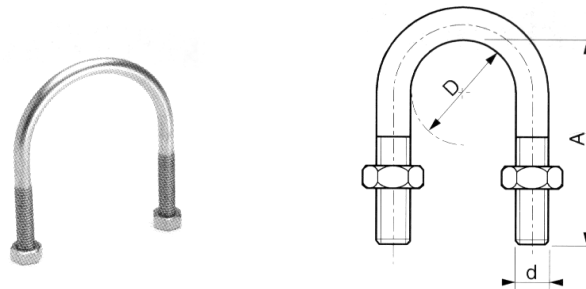


DN	D	L	A	Poids (kg)	Référence 304L	Référence 316L
8	1/4"	15	22	0.035	AMSS32BFW8	AMSS34BFW8
12	3/8"	17	26	0.060	AMSS32BFW12	AMSS34BFW12
15	1/2"	19	32	0.090	AMSS32BFW15	AMSS34BFW15
20	3/4"	23	38	0.150	AMSS32BFW20	AMSS34BFW20
25	1"	26	45	0.230	AMSS32BFW25	AMSS34BFW25
32	1"1/4	28	55	0.390	AMSS32BFW32	AMSS34BFW32
40	1"1/2	30	65	0.550	AMSS32BFW40	AMSS34BFW40
50	2"	36	75	0.780	AMSS32BFW50	AMSS34BFW50

ETRIERS

Etriers pour tube I.S.O

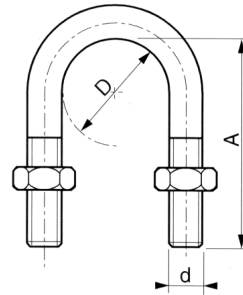
AMS2ETR / AMS4ETR / AMSBETR



Livré avec 2 écrous

DN	D pouces	D mm	d	A	Poids (kg)	Référence 304	Référence 316	Référence Bichro
8	1/4"	13	6	38	0.020	AMS 2ETR 13	AMS 4ETR 13	AMS BETR 13
12	3/8"	17	6	42	0.020	AMS 2ETR 17	AMS 4ETR 17	AMS BETR 17
15	1/2"	21	6	46	0.020	AMS 2ETR 21	AMS 4ETR 21	AMS BETR 21
20	3/4"	27	8	52	0.050	AMS 2ETR 27	AMS 4ETR 27	AMS BETR 27
25	1"	34	8	59	0.055	AMS 2ETR 34	AMS 4ETR 34	AMS BETR 34
32	1"1/4	42	8	67	0.065	AMS 2ETR 42	AMS 4ETR 42	AMS BETR 42
40	1"1/2	49	8	74	0.070	AMS 2ETR 49	AMS 4ETR 49	AMS BETR 49
50	2"	60	8	85	0.080	AMS 2ETR 60	AMS 4ETR 60	AMS BETR 60
65	2"1/2	76	8	106	0.090	AMS 2ETR 76	AMS 4ETR 76	AMS BETR 76
80	3"	89	10	119	0.175	AMS 2ETR 89	AMS 4ETR 89	AMS BETR 89
90	3"1/2	102	10	132	0.185	AMS 2ETR 102	AMS 4ETR 102	AMS BETR 102
100	4"	114	10	144	0.205	AMS 2ETR 114	AMS 4ETR 114	AMS BETR 114
125	5"	139	10	174	0.285	AMS 2ETR 139	AMS 4ETR 139	AMS BETR 139
150	6"	168	12	203	0.405	AMS 2ETR 168	AMS 4ETR 168	AMS BETR 168
175	7"	193	12	228	0.535	AMS 2ETR 193	AMS 4ETR 193	AMS BETR 193
200	8"	219	14	254	0.705	AMS 2ETR 219	AMS 4ETR 219	AMS BETR 219
225	9"	244	14	289	0.780	AMS 2ETR 244	AMS 4ETR 244	AMS BETR 244
250	10"	273	14	318	0.835	AMS 2ETR 273	AMS 4ETR 273	AMS BETR 273
300	12"	324	16	369	1.600	AMS 2ETR 324		
350	14"	355	18	400	2.050	AMS 2ETR 355		
400	16"	406	18	451	2.500	AMS 2ETR 406		
450	18"	458	18	503	2.700	AMS 2ETR 458		
500	20"	508	18	553	4.500	AMS 2ETR 508		
550	22"	558	20		6.500	AMS 2ETR 558		
600	24"	610			7.300	AMS 2ETR 610		

Etriers pour tube métrique AMS2ETR / AMS4ETR



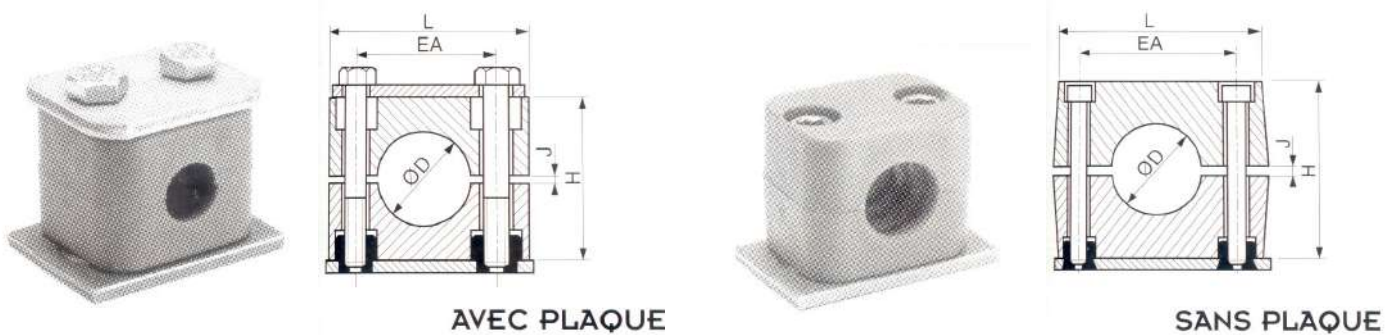
Livré avec 2 écrous

D	d	A	Poids (kg)	Référence 304	Référence 316
54	8	74	0.075	AMS2ETR54	AMS4ETR54
64	8	85	0.085	AMS2ETR64	AMS4ETR64
70	8	100	0.090	AMS2ETR70	AMS4ETR70
84	10	119	0.165	AMS2ETR84	AMS4ETR84
104	10	144	0.200	AMS2ETR104	AMS4ETR104
124	10	160	0.240	AMS2ETR124	AMS4ETR124
129	10	160	0.245	AMS2ETR129	AMS4ETR129
154	12	188	0.385	AMS2ETR154	AMS4ETR154
159	12	190	0.400	AMS2ETR159	AMS4ETR159
204	14	240	0.690	AMS2ETR204	AMS4ETR204
254	14	290	0.810	AMS2ETR254	AMS4ETR254

COLLIERS POLYPROPYLENE

Colliers polypro avec ou sans plaque de protection 304L

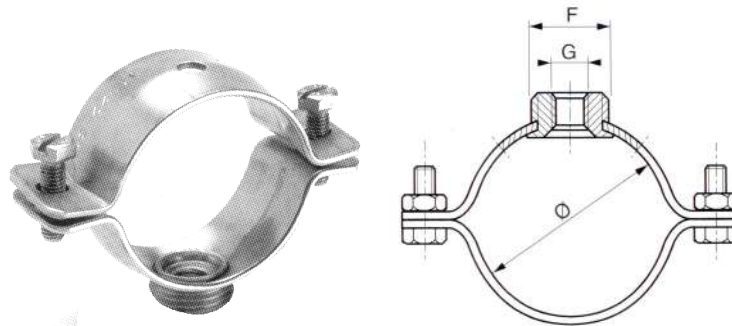
AMS2CPP / AMS2CPS



Ø D	H	L	EA	J	Référence Avec plaque	Référence Sans plaque
6	27	37	20	0.4	AMS2CPP6	AMS2CPS6
8	27	37	20	0.4	AMS2CPP8	AMS2CPS8
10	27	37	20	0.4	AMS2CPP10	AMS2CPS10
12	27	37	20	0.4	AMS2CPP12	AMS2CPS12
13.5	33	42	26	0.6	AMS2CPP13	AMS2CPS13
14	33	42	26	0.6	AMS2CPP14	AMS2CPS14
15	33	42	26	0.6	AMS2CPP15	AMS2CPS15
16	33	42	26	0.6	AMS2CPP16	AMS2CPS16
17.2	33	42	26	0.6	AMS2CPP17	AMS2CPS17
18	33	42	26	0.6	AMS2CPP18	AMS2CPS18
20	35	50	33	0.6	AMS2CPP20	AMS2CPS20
21.3	35	50	33	0.6	AMS2CPP21	AMS2CPS21
22	35	50	33	0.6	AMS2CPP22	AMS2CPS22
25	35	50	33	0.6	AMS2CPP25	AMS2CPS25
26.9	42	58	40	0.6	AMS2CPP26	AMS2CPS26
28	42	58	40	0.6	AMS2CPP28	AMS2CPS28
30	42	58	40	0.6	AMS2CPP30	AMS2CPS30
32	58	69	52	0.8	AMS2CPP32	AMS2CPS32
33.7	58	69	52	0.8	AMS2CPP33	AMS2CPS33
35	58	69	52	0.8	AMS2CPP35	AMS2CPS35
38	58	69	52	0.8	AMS2CPP38	AMS2CPS38
42.4	58	69	52	0.8	AMS2CPP42	AMS2CPS42
48.3	66	86	66	0.8	AMS2CPP48	AMS2CPS48

COLLIERS ½ COQUILLE

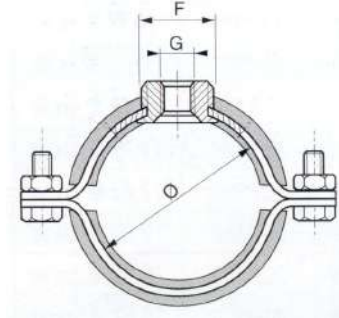
Colliers supports de tuyauterie 304 AMS2CAS



Ø	Pouces	F	G	Poids (kg)	Référence
21/25	1/2"	1/2"	M10	0.11	AMS2CAS21
26/31	3/4"	1/2"	M10	0.12	AMS2CAS26
32/36	1"	1/2"	M10	0.13	AMS2CAS34
41/46	1"1/4	1/2"	M10	0.14	AMS2CAS42
47/52	1"1/2	1/2"	M10	0.15	AMS2CAS48
59/63	2"	1/2"	M10	0.17	AMS2CAS60
74/79	2"1/2	1/2"	M10	0.25	AMS2CAS76
87/92	3"	1/2"	M10	0.27	AMS2CAS89
100/105	3"1/2	1/2"	M10	0.30	AMS2CAS102
112/117	4"	1/2"	M10	0.32	AMS2CAS114
137/143	5"	3/4"	M12	0.55	AMS2CAS139
164/169	6"	3/4"	M12	0.62	AMS2CAS168
213/219	8"	3/4"	M12	0.77	AMS2CAS219

Colliers avec manchon d'isolation 304

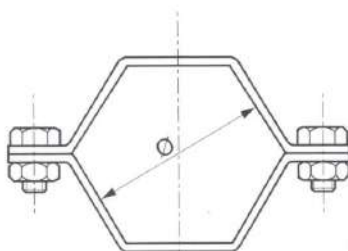
AMS2CAA



Ø	Pouces	F	G	Poids (kg)	Référence
10-13	1/4"	1/2"	M10	0.13	AMS2CAA13
14-18	3/8"	1/2"	M10	0.15	AMS2CAA17
19-22	1/2"	1/2"	M10	0.16	AMS2CAA21
23-28	3/4"	1/2"	M10	0.17	AMS2CAA26
29-34	1"	1/2"	M10	0.19	AMS2CAA34
41-45	1"1/4	1/2"	M10	0.22	AMS2CAA42
46-50	1"1/2	1/2"	M10	0.22	AMS2CAA48
56-61	2"	1/2"	M10	0.34	AMS2CAA60
75-81	2"1/2	1/2"	M10	0.38	AMS2CAA76
88-93	3"	1/2"	M10	0.42	AMS2CAA89
100-105	3"1/2	1/2"	M10	0.47	AMS2CAA102
112-118	4"	1/2"	M10	0.50	AMS2CAA114
139-145	5"	3/4"	M12	0.79	AMS2CAA139
168-170	6"	3/4"	M12	0.91	AMS2CAA168

Colliers hexagonaux sans tige -ISO 304

AMS2CH



Ø Tube	Référence
21.3	AMS2CH21
26.9	AMS2CH27
33.7	AMS2CH34
42.4	AMS2CH42
48.3	AMS2CH49
60.3	AMS2CH60
76.1	AMS2CH76
88.9	AMS2CH89
114.3	AMS2CH114

COLLIERS DE SERRAGE

Colliers à vis tangentes 304

AMS2CVT



	Bande largeur 9 mm		Bande largeur 13 mm	
Ø	Poids (kg)	Référence	Poids (kg)	Référence
8-16	0.010	AMS2CVT98		
12-20	0.013	AMS2CVT912		
16-25	0.014	AMS2CVT916	0.023	AMS2CVT1316
20-32	0.015	AMS2CVT920	0.025	AMS2CVT1320
25-40	0.017	AMS2CVT925	0.027	AMS2CVT1325
32-50	0.019	AMS2CVT932	0.030	AMS2CVT1332
40-60	0.020	AMS2CVT940	0.031	AMS2CVT1340
50-70	0.022	AMS2CVT950	0.035	AMS2CVT1350
60-80	0.024	AMS2CVT960	0.037	AMS2CVT1360
70-90	0.025	AMS2CVT970	0.043	AMS2CVT1370
80-100	0.027	AMS2CVT980	0.046	AMS2CVT1380
90-110	0.028	AMS2CVT990	0.049	AMS2CVT1390
100-120			0.051	AMS2CVT13100
110-130			0.053	AMS2CVT13110
120-140			0.057	AMS2CVT13120
130-150			0.058	AMS2CVT13130
140-160			0.060	AMS2CVT13140
150-170			0.064	AMS2CVT13150
160-180			0.064	AMS2CVT13160
170-190			0.069	AMS2CVT13170

COLLIERS A TOURILLONS

Colliers à tourillons inox 304

AMS2CAT



Plage de serrage	Largeur bande	Référence
17-19	18	AMS2CAT17
19-21	18	AMS2CAT19
21-23	18	AMS2CAT21
23-25	18	AMS2CAT23
25-27	18	AMS2CAT25
27-29	18	AMS2CAT27
29-31	20	AMS2CAT29
31-34	20	AMS2CAT31
34-37	20	AMS2CAT34
37-40	20	AMS2CAT37
40-43	20	AMS2CAT40
43-47	20	AMS2CAT43
47-51	20	AMS2CAT47
51-55	20	AMS2CAT51
55-59	20	AMS2CAT55
59-63	25	AMS2CAT59
63-68	25	AMS2CAT63
68-73	25	AMS2CAT68
73-79	25	AMS2CAT73
79-85	25	AMS2CAT79
85-91	25	AMS2CAT85
91-97	25	AMS2CAT91
97-104	25	AMS2CAT97
104-112	25	AMS2CAT104
112-121	25	AMS2CAT112
121-130	25	AMS2CAT121
130-140	25	AMS2CAT130
140-150	25	AMS2CAT140
150-162	25	AMS2CAT150
162-174	25	AMS2CAT162
174-187	25	AMS2CAT174
187-200	25	AMS2CAT187
200-213	25	AMS2CAT200
213-226	25	AMS2CAT213
226-239	25	AMS2CAT226
239-252	25	AMS2CAT239

